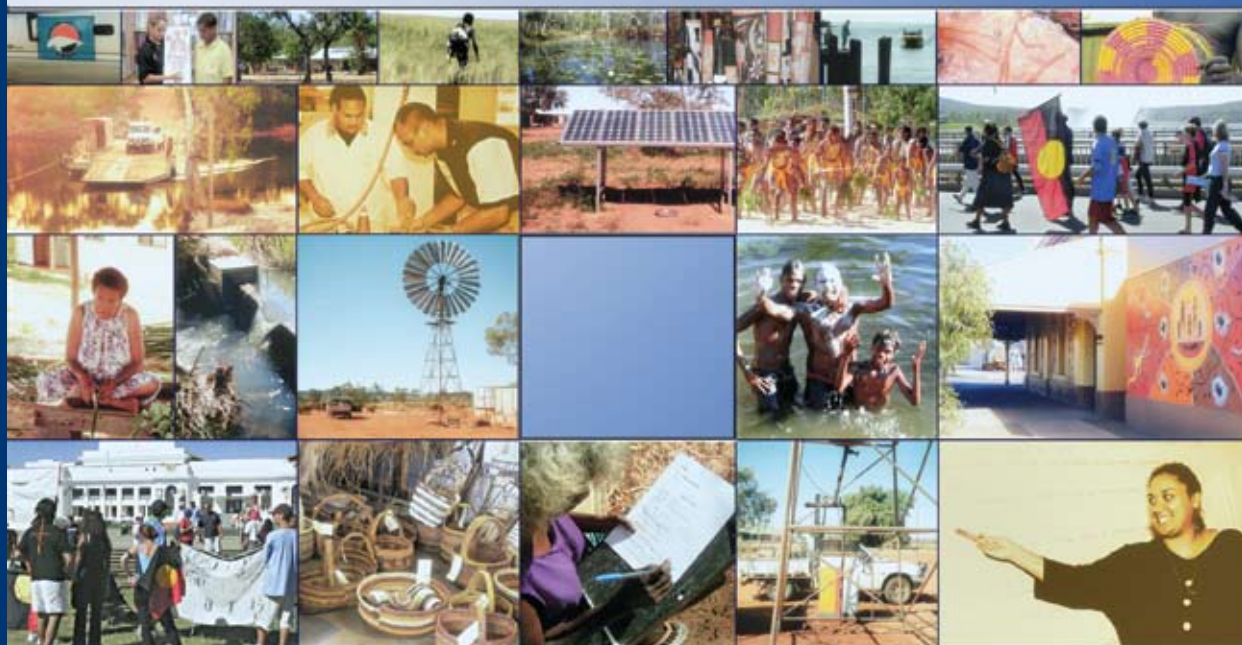


2009 ANNUAL REPORT



CENTRE FOR ABORIGINAL ECONOMIC POLICY RESEARCH

ANNUAL REPORT 2009

College of Arts and Social Sciences
The Australian National University
Canberra ACT 0200

CAEPR'S MISSION is to undertake multidisciplinary social science research on Indigenous policy and development that is excellent by the best international and disciplinary standards and that informs intellectual understanding, public debate, policy formation and community action.

CAEPR'S VISION is to set the standard of excellence in research, education and community engagement on Indigenous policy and development.

Centre for Aboriginal Economic Policy Research
College of Arts and Social Sciences
The Australian National University
Canberra ACT 0200
Telephone: 02-61250587
Facsimile: 02-61259730
World Wide Web: www.anu.edu.au/caepr/

© 2010, Centre for Aboriginal Economic Policy Research, ANU

ISSN 1321-3113

Compiled and edited by Hilary Bek, CAEPR.

Layout and Proofing by John Hughes and Katherine May, CAEPR.

Cover page photographs courtesy the Australian Institute of Aboriginal and Torres Strait Islander Studies and CAEPR staff members.

Printed in Australia by University Printing Service, Australian Capital Territory.

TABLE OF CONTENTS

ACRONYMS.....	v
REPORT FROM THE DIRECTOR.....	1
INTRODUCTION.....	9
MANAGEMENT AND STRUCTURE.....	10
HONOURS.....	15
INDIGENOUS PARTNERSHIPS AND ENGAGEMENT.....	15
CAEPR RESEARCH PROGRAM 2009.....	18
<i>SPOTLIGHT: PEOPLE ON COUNTRY: HEALTHY LANDSCAPES AND INDIGENOUS ECONOMIC FUTURES</i> ...21	
<i>SPOTLIGHT: THE FITZROY VALLEY POPULATION PROJECT</i>	25
<i>SPOTLIGHT: INDIGENOUS YOUTH LEARNING IN REMOTE AUSTRALIA</i>	30
STUDENTS AND TEACHING	35
VISITORS TO CAEPR.....	38
<i>SPOTLIGHT: ECONOMIC POSSIBILITIES IN REMOTE INDIGENOUS AUSTRALIA: THE HYBRID ECONOMY MODEL</i>	39
CAEPR AND THE ANU.....	41
CAEPR PROFESSIONAL ACTIVITIES, COLLABORATIONS AND OUTREACH	40
COMMUNICATING OUR RESEARCH	40
APPENDIX A. CAEPR CONSOLIDATED FINANCIAL STATEMENT	47
APPENDIX B. STAFF BALANCE.....	49
APPENDIX C. STAFF PUBLICATIONS	50
APPENDIX D. PUBLISHED COMMENTARIES, WEB-BASED PAPERS AND UNPUBLISHED REPORTS.....	57
APPENDIX E. PUBLIC LECTURES, SEMINARS, WORKSHOPS, CONFERENCES	63
APPENDIX F. KEY MEDIA PUBLICATIONS	78
APPENDIX G. CAEPR PUBLICATIONS PROGRAM.....	80
APPENDIX H. CAEPR STAFF LECTURES IN ANU COURSES.....	81
APPENDIX I. CAEPR AND THE ANU	83
APPENDIX J. INTERNATIONAL COLLABORATIONS	85
APPENDIX K. PROFESSIONAL ACTIVITIES, COLLABORATIONS AND OUTREACH	87

FIGURES & TABLES

FIG. 1. RECENT CAEPR COLLABORATIVE RESEARCH PARTNERS	17
FIG. 2. CAEPR WEB TRAFFIC, JANUARY 2003-DECEMBER 2009.....	43
TABLE 1. CAEPR WEB TRAFFIC, BY MONTH, 2009	44
TABLE 2. DOCUMENTS AND PODCASTS DOWNLOADED FROM CAEPR WEBSITE, 2009.....	45
TABLE 3. CAEPR MONOGRAPHS DOWNLOADED THROUGH ANU E PRESS, 2008 AND 2009	45
TABLE 4. CAEPR CONSOLIDATED FINANCIAL STATEMENTS, 2009 AND 2008.....	48
TABLE 5. CAEPR STAFF GENDER AND EMPLOYMENT CATEGORY BALANCE, 2009.....	49

ACRONYMS

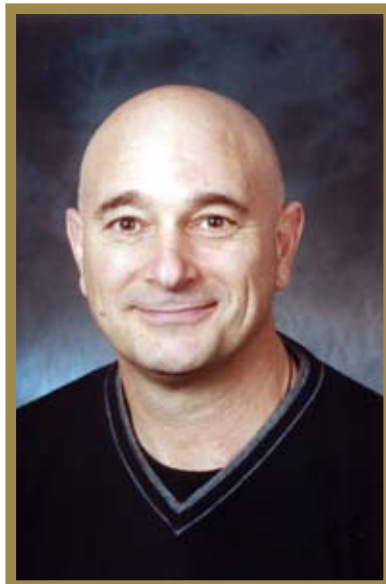
ABS	Australian Bureau of Statistics
AEDP	Aboriginal Employment Development Program
AIATSIS	Australian Institute of Aboriginal and Torres Strait Islander Studies
ANU	The Australian National University
ARC	Australian Research Council
CAEPR	Centre for Aboriginal Economic Policy Research
CASS	College of Arts and Social Sciences
CDEP	Community Development Employment Project (Program)
CDU	Charles Darwin University
COAG	Council of Australian Governments
CSIRO	Commonwealth Scientific and Industrial Research Organisation
DECCW	Department of Environment, Climate Change and Water
DEWHA	Department of the Environment, Water, Heritage and the Arts
DKCRC	Desert Knowledge Cooperative Research Centre
FaHCSIA	Department of Families, Housing, Community Services and Indigenous Affairs
FSES	Fenner School of Environment and Society (ANU)
GiB	gibibytes
IPA	Indigenous Protected Area
MAAPD	Master of Applied Anthropology and Participatory Development
MCATSIA	Ministerial Council on Aboriginal and Torres Strait Islander Affairs
NGO	non-government organisation
NAILSMA	North Australia Indigenous Land and Sea Management Alliance
RSSS	Research School of Social Sciences
TRaCK	Tropical Rivers and Coastal Knowledge (network)
Warddeken LML	Warddeken Land Management Limited

REPORT FROM THE DIRECTOR

Let me begin my introductory comments where I ended last year. 2009 was CAEPR's 20th year since establishment in April 1990 and I suggested that it would be an enormously challenging year for Indigenous policy-making and research. On reflection, I am not sure why I wrote this, because it is hard to recall any year that has been an exception to this observation. In many ways 2009 was a year of highly productive and publicly engaged business-as-usual for CAEPR, but also a year when the Centre firmly consolidated its situation, sustainability and role within The Australian National University (ANU).

In 2009 there were no path-breaking statements like the National Apology of February 2008, although on 3 April 2009 the Australian government lent its belated support to the United Nations Declaration on the Rights of Indigenous Peoples. At the same time the Council of Australian Governments (COAG) looked to institutionally embed the Rudd Government's Closing the Gap policy framework with the signing off in July of the National Indigenous Reform Agreement consisting a series of National Partnership Agreements. The hallmarks of this new approach seem to be threefold. First, there is a greater focus on measuring statistical outcomes in meeting an agreed set of targets to close (or reduce) gaps in life expectancy, infant mortality, educational and employment outcomes. Second there are unprecedented long-term financial commitments to address disparities between Indigenous and other Australians alongside a requirement that the Commonwealth, States and Territories transparently verify their relative financial contributions. And finally there is a Commonwealth-initiated requirement that less than 30 larger discrete Indigenous communities (out of over 1,000) in regional and remote Australia be specially targeted for initial assistance. At the same time, there has been considerable governmental discussion of the need for evidence-based policy making and the development of performance monitoring frameworks to assess progress in Closing the Gap. However, it is very evident that despite major commitments to gather additional statistical information made in July 2009 and a requirement that the Productivity Commission report on progress in meeting targets in its reporting, it will take time for such new instruments for measuring progress to be established and bed down. This was very evident in the Prime Minister's second anniversary speech on Closing the Gap delivered on 11 February 2010: most statistical trends referred to ended, rather than began, in 2008 in part because of natural lead times in collecting reliable information by official agencies like the Australian Bureau of Statistics.

While the field for collecting and analysing official statistics is becoming more crowded, the CAEPR university-based project continues to fulfil a key national role perhaps because it is less bureaucratic and more at-arms-length from governments than other far larger agencies like the Productivity Commission or Australian Institute



of Health and Welfare. In particular, CAEPR's Indigenous Population Project led by John Taylor and sponsored by the Ministerial Council for Aboriginal and Torres Strait Islander Affairs (MCATSIA) (see <<http://www.anu.edu.au/caepr/projects/mcatsia.php>>) has gone from strength to strength. The project is focused on reporting Indigenous demographic, social and economic trends. Now entering its third year, it has clearly informed and influenced all members of MCATSIA to such an extent that, after review, discussions of continuation for a further period of three years from late in 2010 are already well advanced and likely to proceed. A critical international peer review element of this project has been the presentation of a number of papers by members of the Indigenous Population Project team at the International Aboriginal Policy Research Conference held in Ottawa, Canada in March 2009; and elsewhere nationally and internationally.

Operating to an almost identical external support cycle is the People on Country Project (see <<http://www.anu.edu.au/caepr/projects/country.php>>), an unusual university-based project largely sponsored by a major grant from the Sidney Myer Fund. During its second year this project has also expanded its activities while bedding down relationships with seven community-based Caring for Country projects in the tropical savanna of the Northern Territory. This project has embraced interdisciplinarity and Indigenous collaboration in a manner that is probably unprecedented for CAEPR in that we have extended project expertise to include a natural scientist. Emilie Ens has established over 30 environmental trial sites with our partners that are being managed by Indigenous rangers with whom she is actively collaborating, while also transferring environmental monitoring skills in the use of highly sophisticated CyberTracker technology. From December 2009 to February 2010 this project was independently and very positively reviewed by Dermot Smyth (report available at <<http://www.anu.edu.au/caepr/country/research.php#reports>>) and the Sidney Myer Trust has committed to assist its continuation till the end of 2012.

The work in the area of Indigenous well-being and environmental management expanded in several unanticipated ways in 2009: through the establishment of a new project sponsored by the Tropical Rivers and Coastal Knowledge network at Charles Darwin University, work for the Natural Resource Advisory Council in New South Wales, research on the possible impacts of climate change on remote Aboriginal communities in northern Australia sponsored by the Commonwealth Department of Climate Change; and research for the CSIRO-led scientific report to the Northern Australia Land and Water Taskforce.

These are just two of our major projects that have gained momentum in 2009. There have been many other achievements that are recorded in this annual report. I would just like to focus here on a few highlights including:

- The Youth Learning Event held in Darwin in September as a part of the ARC Linkage project 'Lifespan Learning and Literacy for Young Adults in Remote Indigenous Communities'. This event included a three-day workshop and a one-day Symposium that was generously supported by our Industry Partner the Fred Hollows Foundation as well as CAEPR's Visiting Indigenous Fellow scheme. The extent of this event held at the Darwin Convention Centre is described elsewhere in this report and also at <<http://www.anu.edu.au/caepr/learning/>>. The extent of the collaborations involved—from bush community members to international experts like Shirley Brice Heath and national experts like Martin Nakata, as well as CAEPR researchers Jerry Schwab and Inge Kral—speaks volumes for the breadth of collaboration.

- The ANU Public Lecture Indigenous 'Australians and Mining: Developing a Sustainable Future?' in August, sponsored by Toyota. This event saw the launch of the monograph *Power, Culture, Economy: Indigenous Australians and Mining* by Richard Denniss of the Australia Institute, followed by a forum. The monograph was the final output from an ARC Linkage project 'Indigenous community organisations and miners: Partnering sustainable regional development?' that had RioTinto and the Committee for Economic Development of Australia as Industry Partners. The forum included four of the contributors to the volume, David Martin, now a Visiting Fellow at CAEPR, Sarah Holcombe, now with the National Centre for Indigenous Studies at ANU, Benedict Scambray, now head of the Aboriginal Areas Protection Authority in Darwin and myself.
- A two-day workshop 'Homelands/Outstations and the Environmental and Strategic Management of Australia' that was convened by Seán Kerins in Canberra and was supported by the Academy of the Social Sciences in Australia, CAEPR's Visiting Indigenous Fellowship scheme and the People on Country project. This workshop brought together people from outstations and their support organisations with other experts in the areas of environmental management, health, education and service delivery to discuss the issue of government support to the nearly 1,000 small dispersed outstation/homeland communities in remote Australia. A resulting communiqué of concern was sent to the Australian Prime Minister and other senior members of the Australian government.

In 2009, as in 2008, the proliferation of reviews of Indigenous policies and programs continued and so CAEPR staff continued to provide a high level of research support to a range of inquiries as documented especially in Appendix D. Such work included submissions to parliamentary inquiries, but also extended to participation in important consultancies often referred to as additional projects. For example, John Taylor assisted the Wadeye community with an important report on the equity of educational funding for a mediation conducted by the Human Rights Commission; and with input to the social impact assessment of the proposed onshore gas storage facility on the Dampier Peninsula in the Kimberley. Other diverse inputs from CAEPR staff included expert opinion from Maggie Brady and Kate Sullivan in relation to a hotel licensing matter in Gilgandra; Will Sanders' work for the Central Land Council on Territory Growth Towns; and a major piece of research on Indigenous interests produced by a team at CAEPR for the CSIRO-led Northern Australia Land and Water Science Review for the Northern Australia Land and Water Task Force. CAEPR, while always needing to carefully balance academic and applied work, seems to fulfil an important role through such rapid response research.

At the same time, and perhaps at the other end of the applied/pure spectrum, CAEPR researchers have ramped up their international collaborations in 2009. Hence this year we have separately listed our international collaborations which occurred both in Australia and overseas at Appendix J. The former in Australia included our collaborations with a group of Japanese anthropologists at a workshop on global indigenous rights in Canberra and the visits from Shirley Brice Heath from the USA, Sumathi Renganathan from Malaysia, and Manuhua Barcham from New Zealand. The latter saw travel overseas by CAEPR staff to conferences and workshops in Norway, the United States of America, Canada, Finland and South Africa. Nicholas Biddle, assisted by Aurora intern Siobhan Mackay,

completed a report on educational marginalisation of Indigenous Australians for the 2009 UNESCO Global Monitoring Report.

In 2009 CAEPR continued to invest in an ongoing major redesign of our website undertaken by Tsvetana Trifonova and John Hughes that began in 2008. This project initially aimed to make our website more interactive and user accessible, but then expanded as new ANU web design requirements were introduced. Our core goal to make our research more widely available to national and international publics has now expanded a little to also provide a web-based portal for some of our research partners, particularly those on the People on Country project who lack any access to the internet. The website is expanding into e-research as evident in the Learning and Literacy and People on Country projects, as well as with the provision of topic guides and tool-kits.

It is extremely pleasing to see continued and rapid growth in CAEPR website hits and document downloads. Total website traffic in 2009 increased by over 100 per cent on 2008. In 2009 the CAEPR website recorded nearly 6 million hits and nearly 800,000 document downloads. Distribution of our monographs, without charge, by the ANU E Press totalled nearly 200,000 downloads. The fundamental and substantial outreach role played by our small publications production and web communications team—consisting of just one full-time and three part-time staff—cannot be overstated.

In 2009, CAEPR continued its graduate teaching in the Masters in Applied Anthropology and Participatory Development (MAAPD) offering the specialisation in Indigenous Policy. We continued to offer the two core courses Indigenous Policy and Indigenous Development in Semesters One and Two. A decision was made in late 2009 for CAEPR to expand its offerings in 2010 to distance teaching via the revamped ANU interactive Wattle system and there are early indications that this has greatly increased the number of students participating in this fee-paying Masters course in 2010, including a resident of a remote outstation. In 2009 we welcomed two new doctoral students, Richard Barcham and Jendrek Hagedor. In early 2010 three more will be joining us, one as a scholar on a new ARC Linkage project 'Philanthropy and Indigenous People: Enhancing Indigenous education outcomes' to collaborate with successful Chief Investigators Jerry Schwab and Janet Hunt. Also in 2009 we hosted two Summer Scholars and five Aurora interns. It was especially pleasing to host Visiting Indigenous Fellows Megan Davis from the Indigenous Law Centre, University of New South Wales and Jack Green and Donald Shadforth, Waanyi-Garawa rangers, as well as welcoming back artists John Mawurndjul and Kay Linjiwanga in conjunction with a major retrospective exhibition at ANU Drill Hall Gallery. As already noted we were also in a position to use our Visiting Indigenous Fellowship scheme to sponsor Roxanne Kenny, Sonya Braybon, Josie Douglas, Harvey Murray, Yananyumul Mununggurr and Wanyubi Marika as Indigenous participants to the Outstations/Homelands Workshop.

In 2009 we enjoyed remarkable stability in staff establishment, with only Maria Davern leaving to a more senior position in the Research School of Social Sciences (RSSS) where, coincidentally, the rest of CAEPR will be joining her in 2010 (see below). During the year we recruited Nanni Concu and Jennifer Koenig to full-time and part-time research fellowships, with the latter located in Maningrida. After a period when CAEPR had no executive officer, from late June Martin Heskins joined us in this position, while in late 2009 Denise Steele was confirmed as CAEPR's

permanent centre administrator. From early 2009 Kirrily Jordan—who had worked as a part-time research assistant at CAEPR in 2008—was appointed as a post-doctoral fellow. A special celebratory mention needs to be made of the RMIT University Vice-Chancellor's Award for Outstanding Thesis 2009 to Janet Hunt, a senior CAEPR staff member, for her doctoral thesis 'Local NGOs in National Development: The Case of East Timor'.

Throughout 2009 a process of structural change was underway within the College of Arts and Social Sciences where CAEPR is located within the ANU. Of particular significance it was agreed that CAEPR should integrate into RISSS rather than continue as a stand-alone University Centre. From 1 January 2010 CAEPR has become a Centre within RISSS and during 2010 will move to co-locate with other RISSS programs in a nearby location on campus. This organisational change will see CAEPR more firmly embedded in ANU, with greater University financial support and greater security, while integration with RISSS will provide opportunity for more collaborations and joint research with other social scientists working both in Indigenous and other areas within Australia and beyond.

A challenge for CAEPR will be to retain its trademark blend of pure and applied research focused on a research area of unquestioned national priority, ensuring that it retains the right balance between outward-looking external partnerships, outreach and policy-oriented research, and scholarly and university prerogatives. The correct balance will only be assured if we get our funding mix and accountability right. The renewed core investment by the Commonwealth in the CAEPR project from 1 July 2010, after a hiatus of four years when we received no core support from the Commonwealth, will assist to ensure that we maintain links with the policy community. In that regard it is important that the philanthropic Sidney Myer Fund will continue its funding commitment to the People on Country project beyond 2010.

On 2 April 2010, CAEPR's 20th anniversary, I am stepping aside as CAEPR's Director to focus full-time on the Theme 2 projects that I lead. This will be my last director's report, a stand-alone preamble to the annual report that was first undertaken in 1999 when CAEPR became a University Centre. I thought I would conclude with some reflections on the road that the CAEPR project has travelled over the past 20 years. Perhaps the best way to do this is to make some comparative observations about the situation and CAEPR in 1990 using our first annual report and today.

CAEPR was established in 1990 by the Australian Government to provide the research needs of a major program; the Aboriginal Employment Development Program (or AEDP) that is rarely referred to today. The AEDP was a Hawke government initiative launched in 1987 to deliver equality in employment, education and income between Indigenous and other Australians by the year 2000. As I noted in one of our early workshops in 1992 on the national survey of Indigenous Australians, were these goals of economic equality to be achieved by the year 2000, a policy framework like the AEDP would become redundant; as would the need for a research centre like CAEPR. Unfortunately, as much statistical research has shown, the gaps have been persistent, although at least at the national level some things have certainly improved, if all too slowly. And so the commitments of successive Australian governments have either been maintained or have grown, but still disparities have persisted. Similarly CAEPR has grown and changed, from a small staff establishment of ten in its first year, funded almost entirely

by government to its 2009 staff establishment of 27 funded from a wide variety of sources including nationally-competitive Australian Research Council grants.

In the early days much of our work was focused on analysing official statistics and providing research services and outputs to governments, Indigenous organisations and the Australian public more generally. While we still enjoy considerable demand for our services in this area, the field has become much more populated since 1990 with a number of other new and existing agencies including the Australian Bureau of Statistics, the Productivity Commission, the Australian Institute of Health and Welfare, the Australian Institute of Aboriginal and Torres Strait Islander Studies, and the Office of the Aboriginal and Torres Strait Islander Social Justice Commissioner also providing analyses of official statistics. This more crowded field is competitive and this should be helpful in ensuring research quality in this important area. At the same time, a number of Indigenous university-based or linked research centres and think tanks have emerged including the Jumbunna Indigenous House of Learning at the University of Technology, Sydney and the Cape York Institute for Policy and Leadership linked to Griffith University. Again this is welcome: ideas competition is a good thing especially in the effort to inform policy reform to more effectively address regionally diverse and deeply entrenched Indigenous economic and social problems. Over the years, our research has broadened quite markedly to now embrace a number of new areas of work, as outlined in this report, supported by a wide range of sponsors. To some extent the very name 'CAEPR' continues to reflect our early links with the AEDP rather than the range of work we now undertake in areas as diverse as environmental management, well-being and poverty alleviation, alcohol policy, education and lifelong learning and community governance, to name but a few.

In 2010 the arena of Indigenous policy is very different to what it was in 1990 when there was far greater bipartisanship in approach, or so it seemed after the passage of the Commonwealth's Council for Aboriginal Reconciliation Act in 1991 with unanimous parliamentary support—there was far greater optimism in those days. Today there may not be major differences between the major parties in broad policy approach, but there is certainly an end to any consensus on the way to approach Indigenous affairs; a more sceptical view about the role that academic researchers might play; and a broad shift in policy to favour far more direct intervention and state surveillance of Indigenous subjects. I suspect that the need for an evidence base built on a combination of statistical research and primary data collection and analysis at the community level, in collaboration with Indigenous partners, is needed now more than ever. And so I also suspect that while CAEPR will be in a slightly different manifestation from 2010, the research, teaching and outreach that it undertakes, year-in year-out, will be needed as much in the immediate future as at any time during the past 20 years.

I would like to end this report with some personal acknowledgments of what has sustained the CAEPR enterprise over the past 20 years. First and foremost has been the collegiality of the staff, what from my university experience is an unparalleled commitment to work in a collaborative and multidisciplinary manner to address commonly held goals agreed by all of us. This might sound a little warm and fuzzy, but a commitment to teamwork and a flat organisational structure has paid great dividends in CAEPR's case; and clearly it has suited many of the staff who have been with the Centre for more than a decade. I thank staff for their research efforts and perseverance

and sound temperament, sometimes working under stressful and difficult circumstances. Second, I would like to thank our supporters, not just those who have provided funding, but also those who have assisted in advisory and collaborative roles. I would like to thank members of the CAEPR Advisory Committee, some of whom have been on the Committee for two decades. I would especially like to thank the Chairman, Nicolas Peterson who has not only been on the Committee since 1990, but has also continuously been its chair from 1999 to 2010. And finally, I would like to thank Indigenous members of communities and organisations around Australia who have worked with us over the past 20 years in a project that has sought to inform all of the diversity of their circumstances, the extent of needs, development aspirations and approaches that might succeed in meeting them.

In April John Taylor will take over as Director of CAEPR for three years and I wish him the very best in his new leadership and management role at the new CAEPR integrated into RSCS. On behalf of all at CAEPR I would also like to congratulate John on his recent and very deserved promotion to Professor, effective 2010. I am stepping aside, but not out of the CAEPR project, and so am looking forward very much to experiencing a different form of collegiality with other staff at CAEPR from April 2010.

A handwritten signature in black ink, appearing to read 'Jon Altman', with a long horizontal stroke underneath.

PROFESSOR JON ALTMAN
DIRECTOR
March 2010



Above, left: CAEPR Visiting Indigenous Fellows Jack Green, Land Management Coordinator for the Garawa and Waanyi/Garawa Ranger groups, and Donald Shadforth, Garawa Ranger, at the National Museum of Australia. Right: Young Marra dancers from Borroloola on their way to the Boonu Boonu Dance Festival, a part of Borroloola's NAIDOC week celebrations. Photos: Seán Kerins.

INTRODUCTION

CAEPR is a multidisciplinary social sciences research centre established in 1990 at ANU. It is a unique national and international research centre, a leading research think-tank on Indigenous policy issues and operates in a complex political arena. Since 1990 it has established an unrivalled reputation and track record in a difficult public policy area of national significance.

CAEPR undertakes research based on a triennial research plan. This theoretically and historically informed scholarship is underpinned by rigorous methodology and evidence. The research is both socially informed and relevant to Indigenous people and to Australian society in general.

Education goals are fundamental to our role which correlates closely with those of the College of Arts and Social Sciences (CASS), one of the seven Colleges at ANU that link research and teaching at undergraduate, postgraduate and higher degree levels. We are currently forming a new strategic plan for the next 3–5 years, and a three-year business plan, which will take account of structural change as CAEPR moves into the Research School of Social Sciences (RSSS) from January 2010.

A central goal at CAEPR is to continue to create and build long-term partnerships with Indigenous stakeholders with a view to supporting and working with key individuals and organisations in the areas of research, education and policy development.

Much CAEPR research is underwritten by ARC project funding; and we have significant research funding relationships with the Ministerial Council on Aboriginal and Torres Strait Islander Affairs (MCATSIA) and the Sidney Myer Fund. Our research priorities also reflect those of valued research and industry partners such as the Australian Bureau of Statistics (ABS), the Department of Families, Housing, Community Services and Indigenous Affairs (FaHCSIA), Fred Hollows Foundation, Desert Knowledge Cooperative Research Centre (DKCRC), Tropical Rivers and Coastal Knowledge (TRaCK) hub, the North Australia Indigenous Land and Sea Management Alliance (NAILSMA), New South Wales Department of Environment, Climate Change and Water (DECCW), and the New South Wales Bureau of Crime Statistics and Research.

MANAGEMENT AND STRUCTURE

CAEPR operates under a Director who is supported by an Advisory Committee. Professor Jon Altman, Foundation Director since 1990, is responsible to the Vice-Chancellor for the overall operation of the Centre and reports also to the Chair of the Advisory Committee. Members are appointed by the Vice-Chancellor, Indigenous community representatives are appointed by the Advisory committee, and one member is appointed by the Secretary of FaHCSIA. The CAEPR Advisory Committee membership for 2009 appears below. The Advisory Committee met in October.

A consolidated financial statement for 2009 (and 2008 for comparative purposes) is provided in Appendix A.

CAEPR ADVISORY COMMITTEE

Professor N. Peterson (Chair), School of Archaeology and Anthropology, CASS, ANU

Mr P. Briggs, Koori Research and Information Centre, Shepparton

Professor B. Chapman, Public Policy, Crawford School of Economics and Government, College of Asia Pacific, ANU

Professor M. Dodson, Director, National Centre for Indigenous Studies, Faculty of Law, ANU

Ms O. Havnen, Head of Aboriginal and Torres Strait Islander Strategy, Red Cross Australia (from September)

Professor P. Kanowski, Fenner School of Environment and Society, College of Science, ANU

Mr M. Keene, Office of Indigenous Policy Coordination, Department of Families, Housing, Community Services and Indigenous Affairs (from September)

Professor P. McDonald, Director, Australian Demographic and Social Research Institute, CASS, ANU

Ms W. Matthews, Office of Indigenous Policy Coordination, Department of Families, Housing, Community Services and Indigenous Affairs

Professor T. Rowse, Professorial Fellow, Centre for Citizenship and Public Policy, University of Western Sydney

PEOPLE ON COUNTRY ADVISORY COMMITTEE

The Advisory Committee for the People on Country (PoC) project was established in 2008. The 2009 PoC Advisory Committee meeting was held in Darwin in June. The members of the committee are:

Mr D. Gillespie, Independent Chair

Ms C. Edwards, The Myer Foundation and Sidney Myer Fund

Professor P. Kanowski, Fenner School of Environment and Society, College of Science, ANU

Ms K. Mackie, Commonwealth Department of the Environment, Water, Heritage and the Arts

Mr J. Morrison, North Australian Indigenous Land and Sea Management Alliance

Dr B. Scambary, Northern Territory Aboriginal Areas Protection Authority

Dr P. Whitehead, Northern Territory Department of Natural Resources, Environment and the Arts

Ms J. Yanner, Northern Land Council

Professor J.C. Altman, Ex-officio, CAEPR, ANU

Dr S. Kerins, Ex-officio, CAEPR, ANU

CAEPR STAFF LIST

CAEPR is staffed by a multi-disciplinary social and environmental sciences team with a range of academic background and experience. A list of staff, students and visitors for 2009 is set out below.

Director

Professor J.C. ALTMAN, BA MA (Hons) *Auck* PhD *ANU*

Deputy Director and Senior Fellow

Dr J. TAYLOR, BA (Hons) *Newc* (UK) PhD *Lvp*

Senior Fellows

Dr W.G. SANDERS, BA (Hons) *Syd* PhD *ANU*

Dr B.H. HUNTER, BA GradDipEc MEd PhD *ANU*

Fellows

Dr M. BRADY, BEd *SA-Slsbry* CAE MA PhD *ANU*

Dr J. HUNT, BEd *Camb* Med *UNE* AdvCertAssocMgt *MtElizaBusSchl/Monash* PhD *RMIT*

Ms F.E.C. MORPHY, BSc (Hons) *UniCollLond* MA (Ling) *ANU* MPhil *Lond*

Dr R.G. SCHWAB, BA *Oregon* MS *Oregon* PhD *ANU*

Research Fellows

Dr N. BIDDLE, BEc (Hons) *Syd* PhD *ANU*

Dr S. KERINS, BA MA (Hons) *Auck* PhD *Griffith*

Dr J. KOENIG, BSc (Hons) *Syd* PhD *CDU* (from August)

Dr G. CONCU, BA *Sassari* MEnvEc *York* PhD *UWA* (from July)

Post Doctoral Fellows

Dr E. ENS, BSc Ecol (Hons) *UNSW* PhD *Woll*

Dr K. JORDAN, BEc (SocSci) Hons *Syd* DipAbStuds *UWS* PhD *UTS* (from January)

Dr I. KRAL, BA *ANU* DipEd *Fndrs* MA (ApplIng) *Melb* PhD *ANU*

Dr S. PROUT, BSc (Hons) *UWA* PhD *Macq*

Research Officer (Statistics)

Ms L.M. YAP, BBusAdmin BApplEc *UC* Hons ApplEc *ANU*

Research Officers

Ms H.J. BEK, BA *CCAE*

Mr G. BUCHANAN, BBus *QUT* BSc (Hons) *Griffith* MGeogSc *ANU* (to December)

Ms K. MAY, BSc (Hons) *Manchester* MA *Sussex*

Graduate Research Assistants

Ms H. BULLOCH, BA, PGDip *Mass* (to July)

Ms G. COSGROVE, BA (Hons) *ANU*

Mr J.P. HUGHES, BA (Hons) *ANU*

Ms M. JOHNS, BA (Hons) *ANU* (to December)

Web Coordinator

Ms T.S. TRIFONOVA, MA *Sofia*

Executive Officer

Ms M. DAVERN (to January)

Mr M. HESKINS, BPubAdmin GradDipBus *NTU* GradDipFinMgt *UNE* MEdSt *NTU* (from June)

Centre Administrator

Ms D. STEELE

Research Scholars

Mr R. BARCHAM, BA Hons *Melb* GradDipNatRes *UNE* (from April)
 Mr G. BUCHANAN, BBus *QUT* BSc (Hons) *Griffith* MGeogSc *ANU* (from March)
 Ms K. FERRO, MA *Vienna* (to June)
 Mr W. FOGARTY, BA UC DipEd *NTU* MAAPD *ANU*
 Mr J. HAGEDORN, BA (Hons) *Melb* (from August)
 Mr S. PAWSON, PGDipHospMgmt MMgmt *Macq*
 Ms K. SULLIVAN, BA (Hons) *Syd* MBA *AGSM*
 Ms D. TEDMANSON, BA MPolAdmin *Flndrs*
 Ms K. THORBURN, BA (Hons) *Adel*
 Ms N. WATSON, LLB *UQ* LLM *QUT* (to May)

Visiting Students

Mr M. JONES
 Ms S. MACKAY
 MR D. MAVEC
 Ms T. MAY
 Ms E. OKEROA
 Ms G. TAYLOR
 Ms D. ZELENY

Visiting Indigenous Fellows

Ms M. DAVIS, BA (AustSt) LLB *UQ* LLM IntlLaw GDLP *ANU*
 Mr J. GREEN
 Ms K. LINDJUWANGA
 Mr J. MAWURNDJUL
 Mr D. SHADFORTH

Visiting Fellows/Centre Visitors

Dr W.S. ARTHUR, HNC (MechEng) *Edin* BA (Hons) MA *UWA* PhD *ANU*
 Professor S. BRICE HEATH, BA *Lynchbg* MA *BallState* PhD *Columbia*
 Dr A.E. DALY, BA (Hons) MA Ec *Melb* PhD *ANU*
 Dr A. FORDHAM, BSc TSTC *Melb* BEd *Monash* MPubPol PhD *ANU*
 Dr D.F. MARTIN, BEng (Chem) (Hons) *UQ* MSc (Hons) LSE PhD *ANU*
 Dr A. REDMOND, BA (Hons) PhD *Syd*
 Dr S. RENGANATHAN, BA (Hons) *USci* MA *UMalaya* PhD *KingsColl*
 Professor T. ROWSE, BA (Hons) MA *Flinders* PhD *Syd*
 Ms D.E. SMITH, BA (Hons) *UQ* MA *ANU*

Centre Associates

Professor I.P.S. ANDERSON, MD BS *Melb* MA (Prelim) *LaTrobe*

Professor L. BEHRENDT, BJuris LLB *UNSW* LLM PhD *Harvard*

Ms J.A. CLARKE, BJuris LLB *Mon*

Mr D. GILLESPIE, BA MLtrs *UNE*

Dr R. LEVITUS, BA LLB MA (Prelim) *Syd* PhD *ANU*

Dr R. MADDEN, BA (Hons) PhD *LaTrobe*

Dr K. PALMER, BA (Hons) *Sheffield* MPhil *Leeds* PhD *UWA*

Professor T.M. ROWSE, BA (Hons) MA *Flinders* PhD *Sydney*

Dr O.G.P. STANLEY, BEc (Hons) *Syd* PhD *ANU*

Mr N.D. WESTBURY

DR P. J. WHITEHEAD, BSc MSc *Adel* PhD *NTU*

EQUAL OPPORTUNITY

The University prepares data on the gender balance of staff and the ratio of academics to non-academics, estimated in relation to whole-of-year full-time equivalent staff. Appendix B provides a snapshot as at 31 March 2009, excluding staff on secondment or on casual and consultancy appointments. The numerical difference between 'people' and 'full-time equivalents' reflects flexible work arrangements.

CAEPR is strongly committed to the principles of gender equity and diversity in the workplace, in accordance with University requirements. Equal Opportunity principles are incorporated into staff selection procedures for all appointments.

ETHICS

As part of ANU, CAEPR is subject to and always aims to comply fully with ANU ethics requirements. All staff, honours and post-graduate students must obtain ethical clearance for research involving humans and comply with the National Health and Medical Research Council's National Statement on Ethical Conduct in Human Research (2007). The ANU Human Research Ethics Committee oversees the introduction of a new approach to ethical review of human research at ANU in the light of the new National Statement. A new three-level classification of ethical risk is now used to simplify the preparation and ethical review of protocols, and to streamline the ethical review of low-risk protocols. Further information is available on the ANU website at <<http://www.anu.edu.au/ro/ORI/human.php>>

Frances Morphy is a member of the Human Research Ethics Committee at ANU, as part of CAEPR's commitment to the principles and processes of ethical conduct in research.

HONOURS

Janet Hunt won the RMIT University Vice-Chancellor's Award for Outstanding Thesis 2009 for her thesis titled 'Local NGOs in National Development: The Case of East Timor', submitted in 2008. The thesis studied the ways in which local East Timorese non-government organisations (NGOs), which had operated under the Indonesian occupation of East Timor, engaged with and tried to influence the United Nations-supervised transition to independence and nationhood, as well as how this turbulent period affected them as organisations. It reflected on self-determination and the way in which building a new state must involve building a new relationship with civil society in the development of a new nation.

Will Sanders was appointed Adjunct Senior Fellow, School for Social and Policy Research, Charles Darwin University.

INDIGENOUS PARTNERSHIPS AND ENGAGEMENT

Partnerships with Indigenous stakeholders are a high priority within CAEPR. Our aim is to build on and create new long-term partnerships at the local, national and international level with a view to supporting and working with key individuals and organisations in areas of research, education and policy development.

More specifically, we aim to:

- formalise and develop both short-term and long-term research partnerships with Indigenous communities both locally and nationally
- disseminate research project information and findings in plain English format that are relevant to local communities and locations, and to Indigenous people more broadly
- continue to work with Indigenous communities and individuals with a view to improving their capacity to undertake their own research relevant to their locality and use the outcomes of that research.

Our Visiting Indigenous Fellowships scheme provides resources for scholars to collaborate with CAEPR researchers. Developed with significant financial contributions from the Rio Tinto Aboriginal Foundation and the Westpac Foundation in partnership with ANU, the program provides opportunities for Indigenous research capacity building, and facilitates collaboration between CAEPR research staff and non-CAEPR Indigenous researchers and leaders. This year fellowships were provided to Megan Davis, Director of the Indigenous Law Centre and Senior Lecturer in the Law Faculty at the University of New South Wales, Jack Green and Donald Shadforth, senior Garawa traditional owners, and Kay Lindjuwanga and John Mawurndjul from Maningrida (see Visitors section).

INDIGENOUS RESEARCH PARTNERS

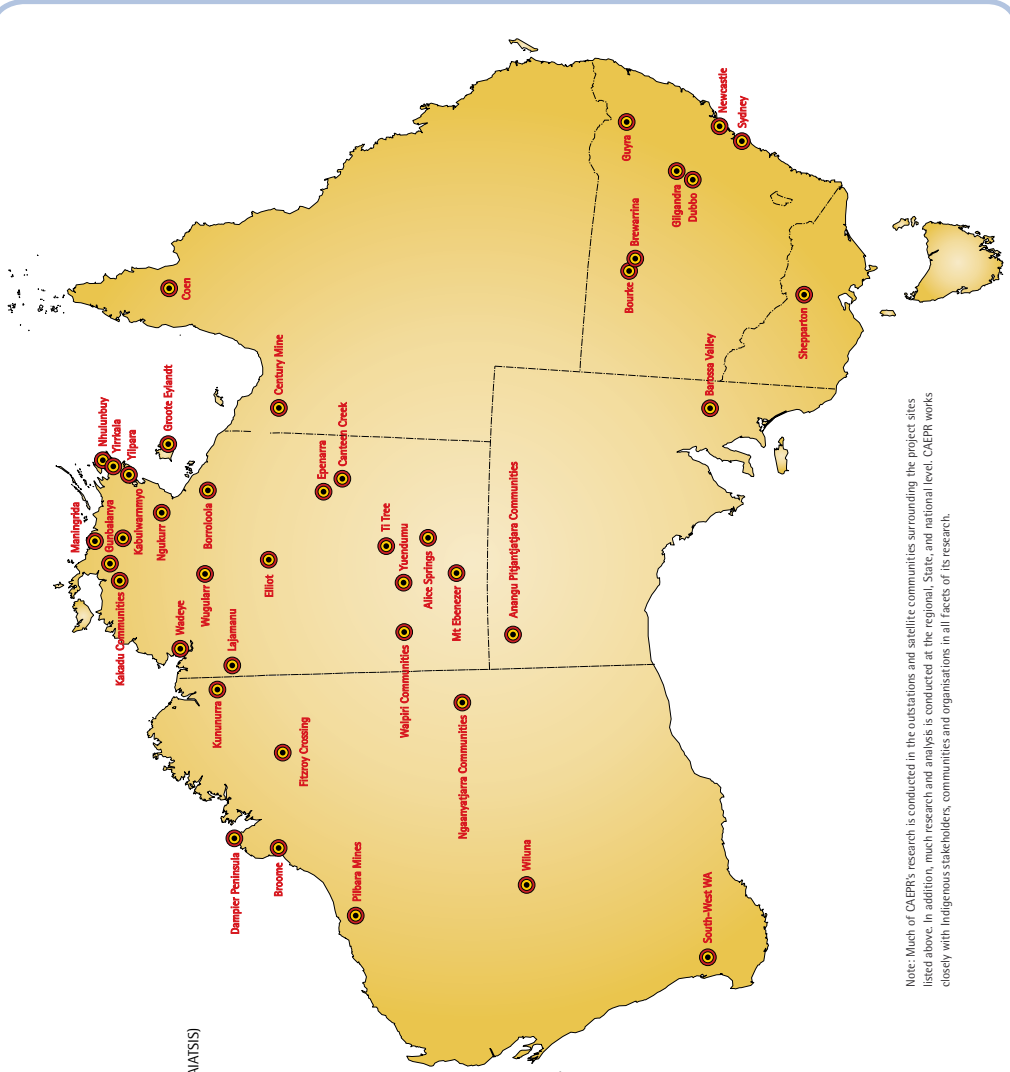
CAEPR's recent Indigenous research partner organisations include (Fig. 1):

Anindilyakwa Land Council
Anindilyakwa Rangers
Australian Institute of Aboriginal and Torres Strait Islander Studies (AIATSIS)
Balkanu Cape York Development Corporation
Banbai Business Enterprises Inc
Bawinanga Aboriginal Corporation
Carpentaria Land Council Aboriginal Corporation
Central Land Council
Dhimurru Aboriginal Corporation
Djelk Rangers
First Nations Foundation
Fred Hollows Foundation Indigenous Literacy Program
Garawa Rangers Indigenous Remote Communications Association
Indigenous Remote Communications Association
Indigenous Water Policy Group
Jumbunna Indigenous House of Learning, University of Technology Sydney
Kimberley Institute
Kimberley Land Council
Laynhapuy Homelands Association Inc.
Marninwarntikura Fitzroy Women's Resource Centre Aboriginal Corp.
Merwangi Rangers
Miyalk Rangers (Yirrkala Rangers)
Ngaanyatjarra Council (Aboriginal Corporation)
Ngapartji-Ngapartji Intergenerational Language and Theatre Group
Ngurrala Aboriginal Corporation—Nyambaga Green Team
North Australia Indigenous Land and Sea Management Alliance (NAILSMA)
Ngarinyin Aboriginal Corporation
Nyaliga Aboriginal Corporation
Northern Land Council
Reconciliation Australia
Thamarrurr Development Corporation
Waanyi/Garawa Rangers
Warddeken Land Management Limited
Warlpiri Education and Training Trust
Wilinggin Aboriginal Corporation
Yamatji Marlpa Aboriginal Corporation
Yirralka Rangers
Yugul Mangi Land and Sea Management Corporation

Fig. 1. Recent CAEPR Collaborative Research Partners

CAEPR's Indigenous Collaborative Research Partners include:

- Anindilyakwa Land Council
- Anindilyakwa Rangers
- Australian Institute of Aboriginal and Torres Strait Islander Studies (AIATSIS)
- Balkan Cape York Development Corporation
- Bambar Business Enterprises Inc
- Bawinanga Aboriginal Corporation
- Carpentaria Land Council/Aboriginal Corporation
- Central Land Council
- Dhimurru Aboriginal Corporation
- Djeik Rangers
- First Nations Foundation
- Fred Hollows Foundation Indigenous Literacy Program
- Garawa Rangers Indigenous Remote Communications Association
- Indigenous Remote Communications Association
- Indigenous Water Policy Group
- Jumbunna Indigenous House of Learning, University of Technology, Sydney
- Kimberley Institute
- Kimberley Land Council
- Laynhapuy Homelands Association Inc.
- Marinwarrtikura Fitzroy Women's Resource Centre Aboriginal Corp.
- Merwari Rangers
- Miyalk Women Rangers (Yirrkala Rangers)
- Ngaanyajarra Council (Aboriginal Corporation)
- Ngapartji-Ngapartji Intergenerational Language and Theatre Group
- Ngurrala Aboriginal Corporation—Nyambaga Green Team
- NAALSMa
- Ngarnym Aboriginal Corporation
- Nyaliga Aboriginal Corporation
- Northern Land Council
- Reconciliation Australia
- Thamarrur Development Corporation
- Waanyi/Garawa Rangers
- Warddeken Land Management Limited
- Waripiri Education and Training Trust
- Willingin Aboriginal Corporation
- Yamatji Warlpa Aboriginal Corporation
- Yirrkala Rangers
- Yugul Manji Land and Sea Management Corporation



Note: Much of CAEPR's research is conducted in the outstations and satellite communities surrounding the project sites listed above. In addition, much research and analysis is conducted at the regional, State, and national level. CAEPR works closely with Indigenous stakeholders, communities and organisations in all facets of its research.

CAEPR RESEARCH PROGRAM 2009

The CAEPR Research Plan 2009–2011 is built around four themes:

- Economic, cultural and social circumstances
- Economic development aspirations and sustainable futures
- Governance, policy and the state
- Education and learning for life

This Research Plan was developed by CAEPR staff at an annual planning retreat in November 2008. It was subsequently endorsed by the CAEPR Advisory Committee in December 2008. Progress on individual research projects in 2009 is described below. The output of each project during 2009 is identified after each project description. The full list and details of the outputs in 2009 are provided in Appendices C to G of this report. The outputs are identified using the following classification system:

- Publications (P)
- CAEPR seminar presentations (S)
- External conference, workshop or seminar presentations (E)
- Published commentaries, submissions, web-based papers and un-published reports (C).

THEME 1. ECONOMIC, CULTURAL AND SOCIAL CIRCUMSTANCES

Comprehensive 2006 Census analysis

John Taylor, Nicholas Biddle, Sarah Prout, Mandy Yap, Boyd Hunter

This project examines change in demographic characteristics and census-derived social indicators for Indigenous and non-Indigenous Australians at national, regional and local scales.

2009 Output: P: 7, S: 1, E: 6.

Regional population profiling

John Taylor, Frances Morphy, Katherine Thorburn

This work extends CAEPR's series of regional population profiles with a focus on the needs of major resource projects and service delivery networks for relevant demographic information. Extensive fieldwork has been undertaken in the Fitzroy Valley, Western Australia on the Fitzroy Valley Population Project. A report will be provided to the Fitzroy Futures Forum early in 2010 and published as a CAEPR monograph.

2009 Output: P: 2, S: 1, E: 5, C: 2.

Short-term mobility

Sarah Prout, Mandy Yap, Nicholas Biddle, John Taylor

This project seeks to establish measures of short-term population movement and to explore the links between such mobility and service delivery with a particular focus on education services. The research offers a blueprint methodology for developing a more robust understanding of Indigenous temporary mobilities through regional centres, and offers best practice strategies from the Broome region for engaging with these population dynamics.

2009 Output: P: 5, E: 7.

Urban segregation

Nicholas Biddle, John Taylor, Mandy Yap

This project focuses on the socioeconomic status of urban Indigenous populations and establishes measures of their spatial and economic segregation in Australian towns and cities. An emerging international literature on the circumstances of urban Indigenous populations and collaborations is being developed in collaboration with the University of Saskatchewan, Canada.

2009 Output: P: 1, S: 2, E: 5.

Gender issues and Indigenous Australians

John Taylor, Nicholas Biddle, Janet Hunt, Mandy Yap

This project explores the relevance of internationally-applied gender-related indices of development to Indigenous population measures in Australia. An ARC Linkage grant application with industry partner Red Cross was submitted, but was unsuccessful.

2009 Output: P: 1, E: 1.

PEOPLE ON COUNTRY: HEALTHY LANDSCAPES AND INDIGENOUS ECONOMIC FUTURES

This action research project supported by the Sidney Myer Fund focuses on linking Indigenous poverty alleviation and natural resource management and new natural resource-based development opportunities in seven Indigenous communities in the Top End of the Northern Territory.

In keeping with the project's action research focus, in 2009 team members have been working in Indigenous communities assisting land and sea management groups develop management plans for invasive species and providing training in ecological survey techniques, and developing stronger governance models for land and sea management activity.

The People on Country project has provided the opportunity for homeland/outstation residents, their resource agencies and peak Aboriginal



organisations to workshop with social scientists, educationalists and medical practitioners about evidence-based research focused on remote communities across Australia. The aim of the homelands/outstation workshop was to give voice to people from homelands/outstations in relation to their growing concern that government policy development in this area be informed by evidence-based research and the aspirations of homeland/outstation residents in order to deliver substantive equality.

Emilie Ens and Seán Kerins drafted a feral pig management strategy with traditional owners from Laynhapuy homelands for the Laynhapuy Homelands Association. Emilie worked with the Yirralka Rangers and Dan Barrow (NT National Parks and Wildlife Service) in the Laynhapuy Homelands, northeast Arnhem Land, to develop a CyberTracker data collection sequence to assist with the monitoring of feral pig and buffalo impacts and the ecological outcomes of their control.

Emilie Ens with Yugul Mangi Land and Sea Management won a Greening Australia NT grant to fund feral animal exclusion fences around billabongs, and to monitor and communicate the results of excluding feral animals from sensitive environmental areas. The aim of this project is to transfer invasive species monitoring techniques so that Indigenous land managers can demonstrate to the wider traditional owner group how wetlands and their food resources can recover when feral animals are excluded or their numbers reduced. Emilie drafted a central and western Arnhem Land grassy weed management strategy and a native frog survey in collaboration with Warddeken LML, Djelk Rangers and Northern Territory Government Weeds Branch.



1. POC ecologist Emilie Ens working with Warddeken Rangers Victor GarIngarr, Ray Nadjamerrek and Seraine Namundja to monitor water quality in remote springs of the Arnhem Plateau that are being damaged by feral buffalo. Photo: Emilie Ens.
2. Garawa and Waanyi/Garawa Rangers Donald Shadforth, Noel Hogan, Robert O'Keefe and Jason Green report back to traditional owners. Photo: Jarrad Holmes.
3. Yugul Mangi Ranger Priscilla Dixon takes notes about the damage caused by feral animals. Photo: Emilie Ens.
4. Mary Kalkiwarra teaches younger generations about bush tucker plants. Photo: Emilie Ens.
5. Yugul Mangi Rangers Ben Wilfred and Anthony Daniels use CyberTracker to quantify buffalo damage. Photo: Emilie Ens.

Analysis of the dynamics of Aboriginal interactions with the criminal justice system

Boyd Hunter, Jerry Schwab, Kate Sullivan

This ARC Linkage Project aims to analyse data from the National Aboriginal and Torres Strait Islander Social Survey and New South Wales local court data. Kate Sullivan continued doctoral research into Indigenous interaction with the justice system, undertaking extended field work in the Dubbo region.

2009 Output: P: 1, S: 1, E: 1.

Longitudinal Study of Indigenous Children

Boyd Hunter, Mandy Yap

This project involves constructing and analysing community profiles, and is being undertaken in collaboration with the FaHCSIA study of the same name.

Closing the Gap

Jon Altman, Nicholas Biddle, Boyd Hunter, Kirrily Jordan

This is an ongoing project measuring the gaps between Indigenous and non-Indigenous Australians and analysing the appropriateness of policy responses. Several conceptual analyses on Indigenous social exclusion and the prospects for social inclusion have clear implications for closing the gap. Related to this research is the Indigenous Clearinghouse Scientific Reference Group, see below. Collaborative work has commenced with Professor Andrew Leigh (Economics Program, RSSS, ANU) on developing audit studies on discrimination in housing, retail and labour markets. Issues related to food supply in remote communities were examined.

2009 Output: P: 5, S: 2, E: 5.

Drought and regional Australian families

Boyd Hunter, Nicholas Biddle

This research explores the relationship between drought, migration and the buoyancy of local labour markets in rural and regional Australia with funding from the Australian Institute of Family Studies. A report titled *The Tyranny of Distance?: Carers in Regional and Remote Areas of Australia* was launched by the Hon. Jenny Macklin at Old Parliament House in October.

2009 Output: P: 3, E: 1, C: 1.

Socioeconomic correlates of Indigenous well-being

Boyd Hunter, Mandy Yap, Nicholas Biddle, Kirrily Jordan, Hannah Bulloch, Geoff Buchanan

This research examines Indigenous well-being, but has been delayed because the first 2008 National Aboriginal and Torres Strait Islander Social Survey results were not released until October. The 2002 Survey was used for an extensive analysis of the socioeconomic correlates of Indigenous well-being, especially those associated with labour force status. Collaborative research is exploring Indigenous well-being and Amartya Sen's 'capabilities approach', applying notions of governmentality, moral economy and personhood.

2009 Output: P: 1, S: 1, E: 1.

Indigenous Australians and alcohol control

Maggie Brady, Boyd Hunter

This ARC Discovery Project, subtitled 'The Impact of Hotel Ownership on Harm Reduction and Social and Economic Development', runs until 2011. Field work was conducted in Alice Springs, Wadeye, and East Kimberley. Data collected on Indigenous-owned pubs is being analysed. Dr Maggie Brady's *The Grog Book* was updated and reprinted by the Department of Health and Ageing (Cwlth); and *Talking about Alcohol with Aboriginal and Torres Strait Islander Patients* (Flip Chart) was reprinted by the Office for Aboriginal and Torres Strait Islander Health, Department of Health and Ageing.

2009 Output: E: 6, C: 1.

Assessing development: Designing better indices of poverty and gender equity

Janet Hunt

This research is working towards new indices of poverty and gender equity applicable at national and supranational levels and to smaller groups affected by a policy or program. Janet Hunt is an Investigator on this ARC Linkage Project with Chief Investigators Prof Thomas Pogge (Centre for Applied Philosophy and Public Ethics), and Dr Sharon Bessell (Policy and Governance Program), Dr Christian Barry (School of Humanities), Dr Yuk Chu Liu (Crawford School of Economics and Government) (all ANU), and Professor Alison Jaggar (University of Colorado, USA) and Partner Investigators from International Women's Development Agency, Oxfam Great Britain, Oxfam America, Philippines Health Social Science Association, and Action Against Hunger (UK).

2009 Output: E: 2, C: 2.

THEME 2. ECONOMIC DEVELOPMENT ASPIRATIONS AND SUSTAINABLE FUTURES

People on Country: Healthy landscapes and Indigenous economic futures

Jon Altman, Seán Kerins, Emilie Ens, Katherine May, Geoff Buchanan, John Hughes

This project is a 3-5 year collaborative research project focusing predominantly on Indigenous land and sea management in the tropical savanna of the Top End and Gulf Country of the Northern Territory, Australia sponsored by the Sidney Myer Fund. Project staff are working with seven community-based Indigenous ranger groups delivering environmental services on Indigenous lands some listed as Indigenous Protected Areas (IPAs). A workshop convened by Seán Kerins on Homelands/Outstations and the Environmental and Strategic Management of Australia, brought together outstations residents, academics and practitioners to discuss the future of outstations and policy intervention in the Northern Territory, resulting in a Communiqué to the Prime Minister. At the end of September Jon Altman escorted a delegation of four Myer Foundation and Sidney Myer Fund advisors on a visit to the Top End to meet with project partners. At the end of 2009 the project was externally reviewed by Dr Dermot Smyth for the Myer Foundation. (For further details see text box.)

2009 Output: P: 1, S: 4, E: 5, C: 4.

Hybrid economic futures for remote Indigenous Australia

Jon Altman, Geoff Buchanan, Kirrily Jordan

This ARC Discovery Project 'Hybrid economic futures for remote Indigenous Australia: Linking poverty reduction and natural resource management' explores theoretical aspects of this field. Geoff Buchanan joined this project as a doctoral scholar in March to undertake an ethnographic study provisionally titled 'Country, culture, economy: Challenges to development in remote Indigenous Australia'.

2009 Output: P: 12, S: 4, E: 17, C: 4.

Effective conservation and sustainable-use economy

Jon Altman, Nanni Concu, Jennifer Koenig

This research project started in July 2009 with funds from the Commonwealth Scientific and Industrial Research Organisation (CSIRO)-led TRaCK project. The goal of the project is to quantify the environmental needs and costs of environmental management in two IPAs: the Djelk IPA and its riverine systems in central Arnhem Land and the coastal area of the Dhimurru IPA in north-east Arnhem Land.

2009 Output: S: 1, E: 2, C: 1.

THE FITZROY VALLEY POPULATION PROJECT

This project was funded by the Fitzroy Futures Forum, a body established to provide an interface between the people of the Fitzroy Valley and government in the planning of the region's socioeconomic future. Its Governing Committee consists of four representatives from the major language groups of the valley, three representatives from government (one each from the Commonwealth, State and Shire), and two representatives from the hub town of Fitzroy Crossing. One of its responsibilities is to administer a community-based grants scheme, disbursing funds allocated to it by the Western Australian Government. It allocates these funds to research projects that will assist in planning for the Valley's future.



The project's co-ordinating team (left to right), Frances Morphy, Christine McPhee, Kathryn Thorburn and 'assistant' Majella Ross.

Photo: Karen Dayman.

The Forum, in discussions with John Taylor, had identified a need for its own baseline population data. In 2008 Marninwarntikura Women's Resource Centre applied successfully for funding to conduct a survey of the Aboriginal population of the valley. A separate grant to CAEPR funded the engagement of Frances Morphy as a consultant on the project. Work began in March 2009, and the completed report will be presented to the Forum during 2010. A copy of the population database will also be handed over, so that it remains permanently in the valley. As well as providing a profile of the valley's population as a whole, each community will have access to its own profile, to assist in planning and in making representations to government.

The data were collected via a survey of every dwelling in the Aboriginal communities of the valley, and also of all dwellings in Fitzroy Crossing's Town Site that were occupied by Aboriginal people. With the assistance of Kathryn Thorburn (Darlgunaya resident and CAEPR PhD scholar) and Christine McPhee (of Ngalapita and Junjuwa communities), over 40 interviewers were recruited and trained to administer the survey in their own communities. This was, then, an exercise in 'participatory demography'.

The survey was designed to collect two different kinds of data. One aim was to carry out a comprehensive head count of the population and gather basic demographic information on age and sex. The second was to collect data that would begin to flesh out the picture of how that population lives as people—the cultural factors that influence patterns of settlement and mobility, and the patterns of connection within and between the communities of the valley. It is hoped that this data will be useful to the people of the valley in their dialogue with government. Governments tend to view communities primarily as collections of bricks and mortar with 'populations' that require 'servicing' and 'infrastructure', whereas the social fabric of their communities is at least equally important to Fitzroy valley people. This survey goes some way to making that social fabric visible, so that it, too, can feature in the ongoing dialogue.

The socioeconomic benefits of working on country for Aboriginal people in NSW

Jon Altman, Janet Hunt, Katherine May, Siobhan Mackay

This project is funded by DECCW and examines the potential to expand IPAs, jointly-managed national parks and the Commonwealth Government's new Working on Country program in New South Wales. Research has commenced at two initial case study sites: Banbai Business Enterprises on the New England Tablelands, and the Nyambaga Goori Green Team, near Nambucca, New South Wales. Research carried out for the Natural Resources Advisory Council on the social benefits of Aboriginal engagement in natural resource management was published as a CAEPR Working Paper.

2009 Output: P: 1, S: 1, E: 3, C: 1.

Indigenous rights, resources and industries

Jon Altman, Bill Arthur, Seán Kerins, Kirrily Jordan

This research focuses firstly on the broad issue of Indigenous property rights in existing and emerging industries and resources including wildlife, carbon trading and biodiversity credits. The National Water Commission funded a report documenting water licences and allocations to Indigenous people for commercial use. Secondly, Jon Altman contributed a chapter to a book project 'Managing Fire Regimes in North Australia Savannas: Ecology, Culture, Economy in northern Australia'.

2009 Output: P: 3, E: 2, C: 3.

Water in Indigenous northern Australia

Jon Altman, Kirrily Jordan, Geoff Buchanan, Seán Kerins, Emilie Ens, Katherine May, Hannah Bulloch,

Research continued with NAILSMA and CSIRO as part of the Indigenous Water Policy Group initiative funded by the National Water Commission, and on the issue of non-market valuations of water as part of TRaCK. CAEPR staff prepared a report on Indigenous interests in land and water for a CSIRO-led *Northern Australia Land and Water Science Review* for the Northern Australia Land and Water Task Force. An e-research Indigenous Freshwater Rights Topic Guide was prepared and is available from the CAEPR website.

2009 Output: P: 1, S: 1, C: 3.

Indigenous people and climate change

Jon Altman, Nicholas Biddle, Kirrily Jordan

This project uses qualitative and quantitative techniques to identify the effect of climate change on Indigenous communities and their economies in northern Australia. The research analysed the potential impacts of predicted climate change on the hybrid economies of Indigenous people across tropical north Australia. This research contributed to a report, *Risks from Climate Change to Indigenous Communities in the Tropical North of Australia*,

for the Commonwealth Department of Climate Change, the Western Australian Department of the Environment and Conservation and the Northern Territory Department of Natural Resources.

2009 Output: P: 2, E: 3, C: 4.

THEME 3. GOVERNANCE, POLICY AND THE STATE

The potential for regional governance in sparsely-settled desert areas

Will Sanders

This field-based research examines governance arrangements in the Anmatjere region of central Australia, focusing on regional/local relations under the new Central Desert Shire. Research with the Central Land Council critiqued the Northern Territory Local Government electoral system and was widely disseminated.

2009 Output: P: 1, S: 2, E: 5.

Economics of sustainable housing

Jon Altman, Will Sanders, Jendrek Hagedorn

As part of an ARC Linkage Project on 'Sustainable Housing in Remote Indigenous Communities' with RMIT, this project involves doctoral research by Jendrek Hagedorn, who joined CAEPR in August, on the economics of providing housing for remote communities. The research examines economic spin-off benefits for local Indigenous people, as well as housing's contributions to other aspects of regional economic development. The Bawinanga Aboriginal Corporation is Industry Partner and much of CAEPR's input will focus on the Maningrida region and the roll-out of the Strategic Indigenous Housing and Infrastructure Program.

International NGOs and community development

Janet Hunt

The pilot study of two international non-government organisations (NGOs) working with Indigenous partners and communities is well advanced. One case study (Oxfam Australia and their partners Yorgum Aboriginal Corporation) has been completed. The results of fieldwork for the second case study (Caritas Australia and their partner, Centacare Wilcannia-Forbes' Manage Your Income Program) will be written up by early 2010. This research was conducted in partnership with Professor Larissa Behrendt, Jumbunna Indigenous House of Learning, University of Technology, Sydney, and with support from Reconciliation Australia and the Australian Council for International Development.

After the National Emergency

Jon Altman, Seán Kerins, Will Sanders

This research tracks the rebuilding of Indigenous Australia and the implications of the Northern Territory Emergency Response in the Northern Territory. A critique of the Northern Territory Government's 'Working Future' initiative is part of this work.

2009 Output: P: 5, S: 2, E: 9, C: 3.

Welfare to work or work to welfare?

Jon Altman, Kirrily Jordan, Melissa Johns, Will Sanders

This research continues to examine the reform of the Community Development Employment Program (CDEP) scheme especially in the Northern Territory but also elsewhere in Australia. It is also examining the Australian Employment Covenant and changes to employment policy, including analysis of Indigenous employment data where available.

2009 Output: E: 1.

Australian public policy in Anangu Pitjantjatjara Yankunytjatjara lands

Deirdre Tedmanson

This doctoral research explores recent changes in public policy towards the Anangu Pitjantjatjara Yankunytjatjara lands and looks back to the original ideas informing the Pitjantjatjara Land Rights Act of 1981 passed by the South Australian parliament.

2009 Output: S: 1.

Indigenous rights in Australia

Katarina Ferro

The scholar withdrew from doctoral research on 'The language of rights among Aboriginal intellectuals in the 21st Century' in June.

2009 Output: S: 1.

Governance success and sustainability in diverse sectors

Janet Hunt, Diane Smith, Katherine May, Katherine Thorburn

This e-research collaboration with Reconciliation Australia continued with the development of the electronic governance toolkit, based on research conducted under the Indigenous Community Governance Project.

THEME 4. EDUCATION AND LEARNING FOR LIFE

Philanthropy, non-government organisations and Indigenous education

Jerry Schwab, Janet Hunt

This research explores the engagement of philanthropic donors and development-focused non-government organisations with Indigenous communities. An ARC Linkage Project proposal titled 'Philanthropy and Indigenous people: Enhancing Indigenous education outcomes' was developed with Industry Partners Melbourne Community Foundation and other Melbourne philanthropic funds, Melbourne, La Trobe and Monash universities, Australian Council for Educational Research and the Victorian Government. which was successful.

2009 Output: E: 1.

Models of youth engagement through land and resource management activities and programs

Jerry Schwab

Data collection continued for this research on international models for re-engaging Indigenous youth through land and resource management programs, as part of an ARC Linkage Project titled 'Custom-based land and resource management and the educational and social re-engagement of Indigenous youth'.

From pedagogy to production: Land, education and remote Indigenous youth

Bill Fogarty

This is an ethnographic study for a PhD thesis undertaken as part of an ARC Linkage Project titled 'Custom-based land and resource management and the educational and social re-engagement of Indigenous youth' running over the period 2006-2009. This doctoral research with the working title 'From Pedagogy to Production: Land, Education and Remote Indigenous Youth', is in the writing-up phase.

2009 Output: S: 1.

Land, resources and youth: A model for policy and program development

Jerry Schwab, Bill Fogarty, Adrian Fordham

This involves policy-focused research on developing program models for effectively engaging young Indigenous people through land and resource management programs and activities. A report was submitted to Indigenous organisations, schools and government.

2009 Output: S: 1, C: 1.

INDIGENOUS YOUTH LEARNING IN REMOTE AUSTRALIA

Rarely do accounts of Indigenous youth in remote Australia focus on young people as active agents, creatively shaping their own learning beyond formal institutional settings. This is not because positive examples of youth learning do not exist, but rather they are often invisible or unrecognised because they occur in contexts or settings we may not notice or think to explore.



Lifespan Learning and Literacy for Young Adults in Remote Indigenous Communities is a participatory research project that aims to explore, document and showcase the many ways in which Indigenous youth—aged between 16 and 25—are extending their learning, expanding their oral and written language skills, and in particular embracing digital culture in community-based domains outside of mainstream learning environments. The project has focused on a small number of 'best practice' learning projects and programs in remote Indigenous communities.

Our research has shown that learning is most effectively fostered through interest-driven engagement in projects and activities that matter to young people, and that these learning environments effectively stimulate the acquisition and



development of language and multimodal literacies, organisational learning and social enterprise. We have observed young people developing high level skills and knowledge, and creating new cultural productions often leading to enterprise generation and employment. But their intent participation in learning has also resulted in some important social outcomes: a positive sense of identity, the development of and transition to mature roles and responsibilities, an increased sense of confidence in engagement with the outside world, and an enhanced quality of life.

Research has been carried out in conjunction with

- Djilpin Arts Aboriginal Corporation at Beswick (Wugularr),
- Ngapartji Ngapartji intergenerational language and arts project in Alice Springs,
- Libraries and Knowledge Centres at Lajamanu and TiTree,
- Ngaanyatjarra Media, at Wingellina,
- Youth Programs at Yuendumu, Nyirripi, Willowra and Lajamanu, and
- Alice Springs Public Library.

In March this year 15 young people and facilitators from six of the sites came together for a week-long workshop at Thakaperte Outstation near Alice Springs. The workshop shifted the research dynamic. From this point onwards the key youth participants understood that they were part of a bigger conversation and it became a reciprocal learning and research relationship. It is young people like Chris Reid, Nathan Brown and Natalie O'Toole from Wingellina; Shane White and Maxwell Tasman from Lajamanu; Revonna Urban, Augustina Kennedy and Amos Urban from Beswick; and Gayle Campbell and Lana Campbell from Ti Tree who have become the most collaborative participants. These young people have had agency in the research process and in their own self-representation. This is evident in their public presentations and the four films prepared for the Youth Learning Symposium that was held at the Darwin Convention Centre in September 2009.

The project is funded by the ARC, ANU, and Fred Hollows Foundation.

Lifespan learning and literacy

Inge Kral, Jerry Schwab

This ARC Linkage Project (with the Fred Hollows Foundation) is focusing on young Indigenous adults in the post-school years and exploring how multimodal literacies can be acquired, transmitted and maintained in community-based projects and across the lifespan. Fieldwork is being undertaken in Wingellina, Alice Springs, Ti Tree, Beswick, and Lajamanu. A Youth Learning Symposium was held in Darwin in September. Research collaboration with Warlpiri Education and Training Trust on literacy assessments involved visits to Yuendumu, Nyirripi and Willowra communities, and Mt Theo Youth Program at Lajamanu. A significant e-research component is represented on the CAEPR website. Inge Kral revised The Ngaanyatjarra Picture Dictionary for reprinting by IAD Press.

2009 Output: S: 6, E: 8; C: 3.

Writing Words—Right Way!

Inge Kral

Preparation continued on a book manuscript based on the doctoral thesis titled 'Writing Words - Right Way! Literacy and Social Practice in the Ngaanyatjarra World' which won the Australian Anthropological Society PhD thesis prize for 2007 for best doctoral thesis by research.

2009 Output: Manuscript to be submitted in 2010.

Science education, training and sustainable employment outcomes

Bill Fogarty, Adrian Fordham

As part of a larger ARC-funded research project dealing with the re-engagement of young people in education, training and employment, this study addresses critical issues related to science education and training in preparing young people and adults for sustainable employment in wildlife enterprises in remote Indigenous communities. In so doing, the study explores the relative contributions of Indigenous ecological knowledge and western science knowledge to these enterprises.

2009 Output: S: 1, C: 1.

Youth, learning and leadership

Jerry Schwab

Explores the challenges faced by Indigenous communities as they look to renew themselves and draw young people into positions of leadership. An evaluation of the Indigenous bursary program run by the Towards a Just Society Fund was undertaken in December.

ADDITIONAL PROJECTS

Each year CAEPR undertakes additional research beyond the research plan developed at the end of the preceding year. Some additional research undertaken in 2009 is outlined in this section.

Minority Indigenous language and literacy

Sumathi Renganathan, Inge Kral, Jerry Schwab

Dr Sumathi Renganathan, an Endeavour Research Fellow from Universiti Teknologi Petronas, Malaysia, is undertaking a research project 'Indigenous children's literacy and schooling: A case study of a contemporary Orang Asli community in Malaysia' in collaboration with CAEPR staff.

2009 Output: S: 1.

Pacific practice and its application among Indigenous Australians

Richard Barcham

This doctoral research aims to reflect both conceptually and empirically on the development and application of community development techniques in Solomon Islands (Solomon Islands Development Trust), Papua New Guinea (Bismark Ramu Group), and Fiji (Social Empowerment and Education Program) from 1982 to the present.

2009 Output: S: 1.

Hotel licensing

Maggie Brady, Kate Sullivan

An expert report was prepared for the Gilgandra Aboriginal Land Council on a hotel licensing matter.

2009 Output: C: 1.

Educational marginalisation of Indigenous Australians

Nicholas Biddle, Siobhan Mackay

A UNESCO Global Monitoring Report was prepared on understanding the educational marginalisation of Indigenous Australians in relation to secondary school population projections in Cape York.

2009 Output: C: 1.

Wadeye education funding

John Taylor

This consultancy research was funded by the Department of Employment and Workplace Relations (Cwlth) and conducted under the auspices of Human Rights and Equal Opportunity Commission. A report was prepared for the Catholic Education Office on the level of funding for education at Wadeye.

2009 Output: C: 1.

Gas storage facility social impact assessment

John Taylor

This consultancy for the Kimberley Land Council involves membership of a small team assessing the social impacts of the major gas storage facility proposed for north-west Western Australia.

2009 Output: C: 2.

Indigenous people's customary use of wild resources in the Broome/Dampier Peninsula region

Geoff Buchanan

This consultancy involved a desktop study report for the Kimberley Land Council as part of its Aboriginal Social Impact Assessment for the proposed liquefied natural gas processing precinct at James Price Point. The overall report will be submitted as part of the overarching assessment of the liquefied natural gas precinct being undertaken jointly by the Western Australian and Commonwealth governments.

STUDENTS AND TEACHING

DOCTORAL STUDENTS

The following doctoral students were located at CAEPR in 2009.

Richard Barcham commenced doctoral research provisionally titled 'A Pacific approach to community development: Can it be transposed to Indigenous Australia?.'

Geoff Buchanan commenced doctoral research in March under the ARC Discovery Project Hybrid Economic Futures for Remote Indigenous Australia, to undertake an ethnographic study titled 'Country, culture, economy: Challenges to development in remote Indigenous Australia.'

Katarina Ferro, international doctoral scholar, withdrew in June from doctoral research on 'The language of rights among Aboriginal intellectuals in the 21st Century'.

Bill Fogarty continued doctoral research on the topic 'From pedagogy to production: Land, education and remote Indigenous youth' with further field work in Arnhem Land, and is now writing up.

Jendrek Hagedorn commenced doctoral research on the economics of housing provision in remote Australia in August, as part of an ARC Linkage Project on Sustainable Housing in Remote Indigenous Communities.

Kate Sullivan continued doctoral research into Indigenous interaction with the justice system in New South Wales. The work applies an ethnographic approach to an analysis of re-offence and desistance from crime.

Deirdre Tedmanson continued doctoral research on the topic 'Anangu Pitjantjatjara and Australian public policy since the 1980s: What can internal decolonisation mean?.'

Kathryn Thorburn has taken leave from doctoral research on 'Whitefella governance? Managing selves, managing others in and around Fitzroy Crossing, Western Australia'.

Nicole Watson withdrew from doctoral research on land rights and Indigenous property rights.

MASTERS STUDENTS

Simon Pawson continued Masters of Philosophy research, focusing on Indigenous tourism.

VISITING STUDENTS

Michael Jones, ANU political science student, joined CAEPR as a Summer Research Scholar, working on a research project 'Modelling Indigenous Affairs: A modified advocacy coalition framework' with Will Sanders.

Siobhan Mackay joined CAEPR as an Aurora Intern over February–June, working with Janet Hunt on native title and joint management in protected areas in New South Wales and with Nicholas Biddle on the educational marginalisation of Indigenous Australians.

Dante Mavec, ANU law student, joined CAEPR as an Aurora Intern during July–August, working with Kirrily Jordan on monitoring the performance of the Australian Employment Covenant over its first year.

Taryn May from University of South Australia joined CAEPR as an ANU Summer Scholar in December, continuing research on Indigenous education supervised by Jerry Schwab.

Erina Okeroa, from New Zealand, joined CAEPR as a Summer Research Scholar, working with Jon Altman and Seán Kerins to investigate the Indigenous Protected Areas model and its potential application in New Zealand.

Georgina Taylor, graduate law and anthropology student at Monash University, joined CAEPR as an Aurora Intern over June–July, working with Janet Hunt on the social benefits of Aboriginal engagement in natural resource management.

Diana Zeleny, ANU graduate law student, joined CAEPR as an Aurora Intern working on Indigenous affairs and native title with Jon Altman.

TEACHING AT CAEPR: INDIGENOUS POLICY

Professor Jon Altman convened a specialist Indigenous Policy stream of the Master of Applied Anthropology and Participatory Development (MAAPD) program at ANU. This is designed for those with an interest in the application of anthropology's critical methods and styles to social issues in Indigenous development. Students have the option of undertaking an internship at CAEPR. In 2009 Will Sanders coordinated Australian Indigenous Policy (ANTH8040) and John Taylor coordinated Australian Indigenous Development (ANTH8045) in Semester 2. The courses critically examined the current social and economic status of Indigenous Australians in both 'remote' and 'settled' Australia and the impacts of public policy. CAEPR staff contributed the majority of the lectures (see Appendix H).

CAEPR staff also presented a number of guest lectures at ANU. Details are provided in Appendix H.

CROSS DISCIPLINARY RESEARCH SUPERVISION

Several students from elsewhere at ANU were supervised by CAEPR staff:

Bree Blakeman, PhD candidate, Department of Archaeology and Anthropology (Advisor, Frances Morphy).

Sophie Close, PhD candidate, National Centre for Indigenous Studies (Co-supervisor, Janet Hunt)

Pauline Fietz, PhD candidate, School of Archaeology and Anthropology (Advisor, Maggie Brady).

Leah Ginnivan, PhB student (Supervisor, Jon Altman).

Kim Johnstone, PhD candidates, Australian Demographic Social Research Institute (Co-supervisor, John Taylor).

Karissa Preuss, MPhil scholar, Fenner School of Environment and Society (FSES) (Supervisor, Jon Altman).

EXTERNAL RESEARCH SUPERVISION

CAEPR staff provided external research supervision to the following students:

Thomas Michel, PhD candidate, Charles Darwin University (CDU) (Advisor, Will Sanders).

Elodie Fache, Centre for Research and Documentation on Oceania, University of Marseille, France (Supervisors, Jon Altman and Seán Kerins).

Michael Honer, School for Environmental Research, CDU (Supervisor, Jon Altman).

GRADUATE EXAMINATIONS

Jon Altman

Examined a PhD thesis for University of Western Australia

Janet Hunt

Examined a PhD thesis for ANU

Boyd Hunter

Examined a Masters thesis for ANU

Examined a PhD thesis for Macquarie University

Examined a PhD thesis for RMIT

David Martin

Examined a PhD thesis for CDU

Will Sanders

Examined a PhD thesis for Griffith University

Jerry Schwab

Examined a PhD thesis for University of Western Australia

Examined an Honours thesis for School of Anthropology and Archaeology, ANU

VISITORS TO CAEPR

VISITING INDIGENOUS FELLOWS

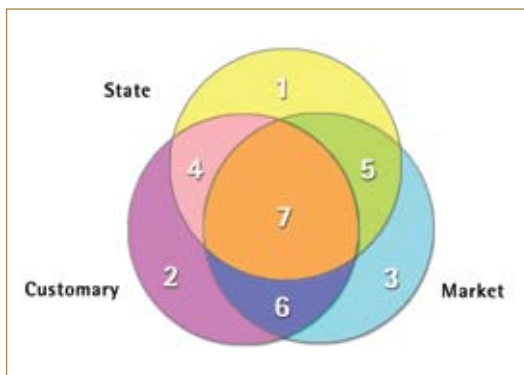
Megan Davis joined CAEPR from March to June 2009 as a Visiting Indigenous Fellow. Ms Davis is Director of the Indigenous Law Centre and Senior Lecturer in the Law Faculty at the University of New South Wales. She is an Australian member of the International Law Association's Indigenous Rights Committee drafting the Expert Commentary on the United Nations Declaration on the Rights of Indigenous Peoples. She visited CAEPR while completing her doctoral thesis on Aboriginal women and self-determination at Regulatory Institutions Network, College of Asia and the Pacific, ANU.

Jack Green and Donald Shadforth, senior Garawa traditional owners, came to CAEPR in April as Visiting Indigenous Fellows collaborating on the People on Country project. They presented a seminar which described community efforts to build a Caring for Country program to tackle threatening ecological processes, create employment in remote areas and assist Waanyi/Garawa and Galawa people return to their country. CAEPR staff facilitated meetings between Mr Green and Mr Shadforth and Australian Government representatives; the visit also provided the opportunity to talk with the academic community about their land and sea management program with the aim of developing further partnerships.

Kay Lindjuwanga and John Mawurndjul visited CAEPR in April to attend the opening of the John Mawurndjul Survey 1979–2009, an exhibition of this leading Australian artist held at the Drill Hall Gallery at ANU.

ECONOMIC POSSIBILITIES IN REMOTE INDIGENOUS AUSTRALIA: THE HYBRID ECONOMY MODEL

In general, policy makers and dominant policy discourse see productive employment and enterprise opportunity in the public or private sectors of the economy. Such an economic development model has shortcomings—either where there is a deficiency of such opportunity or where there is a vibrant customary or non-market sector. Recognising this, the hybrid economy model includes three sectors, customary, market and state rather than the more usual state/market dichotomy. The model is conceptualised as a Venn diagram with four overlapping segments to reflect the articulations or interlinkages between sectors and the mobility of people between these sectors. The hybrid economy model seeks to provide a circuit breaker to thinking about entrenched Indigenous Australian under-development and dependence in remote Australia. Research using this model examines the potential for developing a diverse array of productive possibilities include payment for provision of environmental services, but also in the arts sector, in wildlife harvesting, in carbon abatement activities and so on. The aim is to enhance choice and possibility in livelihoods for Indigenous Australians living on the massive Indigenous estate that now covers over 20 per cent of the continent. The model recognises that some might seek livelihoods in private mainstream employment or in the public sector, but others might prefer opportunity to also engage in customary activity.



The hybrid economy model seeks to provide a circuit breaker to thinking about entrenched Indigenous Australian under-development and dependence in remote Australia. Research using this model examines the potential for developing a diverse array of productive possibilities include payment for provision of environmental services, but also in the arts sector, in wildlife harvesting, in carbon abatement activities and so on. The aim is to enhance choice and possibility in livelihoods for Indigenous Australians living on the massive Indigenous estate that now covers over 20 per cent of the continent. The model recognises that some might seek livelihoods in private mainstream employment or in the public sector, but others might prefer opportunity to also engage in customary activity.

In 2008 Jon Altman was awarded an ARC Australian Professorial Fellowship to undertake this ARC supported research project 'Hybrid economic futures for remote Indigenous Australia: Linking poverty reduction and natural resource management'. He was invited to present an opening keynote address 'The hybrid economy as a political project: Reflections from the Indigenous estate', at Indigenous Participation in Australian Economies: Perspectives from Anthropology, History and Material Culture Studies conference, in Canberra, in November. The hybrid economy model framed research on risks from climate change for Indigenous people in northern Australia for the Department of Climate Change and on Indigenous Interests in Land and Water for the Northern Australia Land and Water Task Force. It also provides the theoretical underpinning for the major project supported by the Sidney Myer Fund 'People on Country, Healthy Landscapes and Indigenous Economic Futures'.

Geoff Buchanan, a PhD scholar at CAEPR, is conducting an ethnographic study over 2009–12 as part of the ARC project with the working title 'Country, culture, economy: Challenges to development in remote Indigenous Australia'. Geoff will conduct fieldwork at three sites in remote areas of Western Australia, Northern Territory and Queensland. This fieldwork will be undertaken with three traditional owner groups—Bardi Jawi traditional owners, Djelk Rangers, and Kooma traditional owners—who are pursuing economic development and employment opportunities through caring for country. This work aims to extend the application of the hybrid economy model, exploring some of the diversity of Indigenous people's experiences across remote Australia. This will build on previous research published this year as a report written with the Bardi Jawi Rangers 'Always part of us': *The Socioeconomics of Indigenous Customary Use and Management of Dugong and Marine Turtles—A View from Bardi and Jawi Sea Country, Western Australia*, as the first of NAILSMA's Knowledge Series.

CENTRE VISITORS

Shirley Brice Heath, Professor at Large, Stanford and Brown Universities, is an international collaborator on the Lifespan Learning and Literacy research project. Professor Brice Heath joined Dr Inge Kral and Dr Jerry Schwab in Darwin in September to participate in the Youth Learning Symposium.

Roger Chennells (human rights lawyer, Chennells Albertyn) and Doris Schroeder (Director, Centre for Professional Ethics, University of Central Lancashire and Professorial Fellow, Centre for Applied Philosophy and Public Ethics, University of Melbourne) visited CAEPR in May to share their research on ethical governance for benefit-sharing trusts.

Anne Daly has been a Visiting Fellow at CAEPR since August 1994. This year she has been collaborating with Boyd Hunter on research into the role of interruptions in the labour market experience of Indigenous Australian females.

Adrian Fordham continued as a Centre Visitor, undertaking a project on knowledge foundations for the development of sustainable wildlife enterprises in remote Indigenous communities of Australia.

David Martin maintains his long association with CAEPR as a Visiting Fellow. While working as a consulting anthropologist, he continues his research interests in such areas as Aboriginal governance, community development, and applied anthropological practice generally.

Anthony Redmond continued as a Visiting Fellow during 2009, whilst continuing his research project on the intercultural economy.

Diane Smith was a Visiting Fellow at CAEPR throughout 2009 continuing her research on Indigenous governance issues.

Sumathi Renganathan, an Endeavour scholar, was a Visiting Fellow in 2009, undertaking a research project 'Indigenous children's literacy and schooling: A case study of a contemporary Orang Asli community in Malaysia' in collaboration with Dr Inge Kral and Dr Jerry Schwab.

Tim Rowse, Professorial Fellow in Centre for Citizenship and Public Policy, University of Western Sydney, has been a Visiting Fellow at CAEPR in 2009 while examining issues of demography and of public policy.

CAEPR AND THE ANU

CAEPR academic staff members are heavily involved in cross-college and cross-university supervision of higher degree research students outside CAEPR (see above). CAEPR staff members have been fully engaged in the bedding down of the new College administration, and participate in several committees operating to implement the new structure. See Appendix I.

CAEPR PROFESSIONAL ACTIVITIES, COLLABORATIONS AND OUTREACH

CAEPR has extensive collaborative arrangements with Indigenous organisations (see Indigenous Engagement section above), Commonwealth agencies, national academies, industry, foundations and other public institutions. These external links, service and activities are detailed in Appendix J.

COMMUNICATING OUR RESEARCH

CAEPR is convinced of the crucial role for evidence-based research of the highest academic standard in influencing the development of public policy in Indigenous affairs. We are constantly focused on promoting our pure and applied research to where it is needed—to Commonwealth, State and local governments, Indigenous communities and organisations, other non-government organisations, and industry—as a priority.

There are several strands to this endeavour.

CAEPR STAFF AND VISITORS PUBLICATIONS AND REPORTS

In 2009, CAEPR staff and visitors produced 63 publications, as indicated in Appendix C. A further 55 published commentaries, web-based papers and unpublished reports are set out in Appendix D.

THE CAEPR PUBLICATIONS PROGRAM

The purpose of the CAEPR publications program is to disseminate research undertaken by CAEPR staff and visitors, as widely and rapidly as possible. This meets the needs of our major stakeholders and fulfils a 'public good' or outreach role that is a major part of our mission.

The entire CAEPR publications series library 1991–2009 is available for download from the website: this now comprises 30 monographs, 289 discussion papers, 58 working papers, and 84 topical issue papers.

Appendix G provides a full listing of CAEPR publications program outputs for 2009.

MEDIA PUBLICATIONS

The year 2009 saw CAEPR staff involved in public debate through television, radio, print and web-based media at an unprecedented level. While it is not feasible to report this effort in detail, authored media publications are detailed in Appendix F.

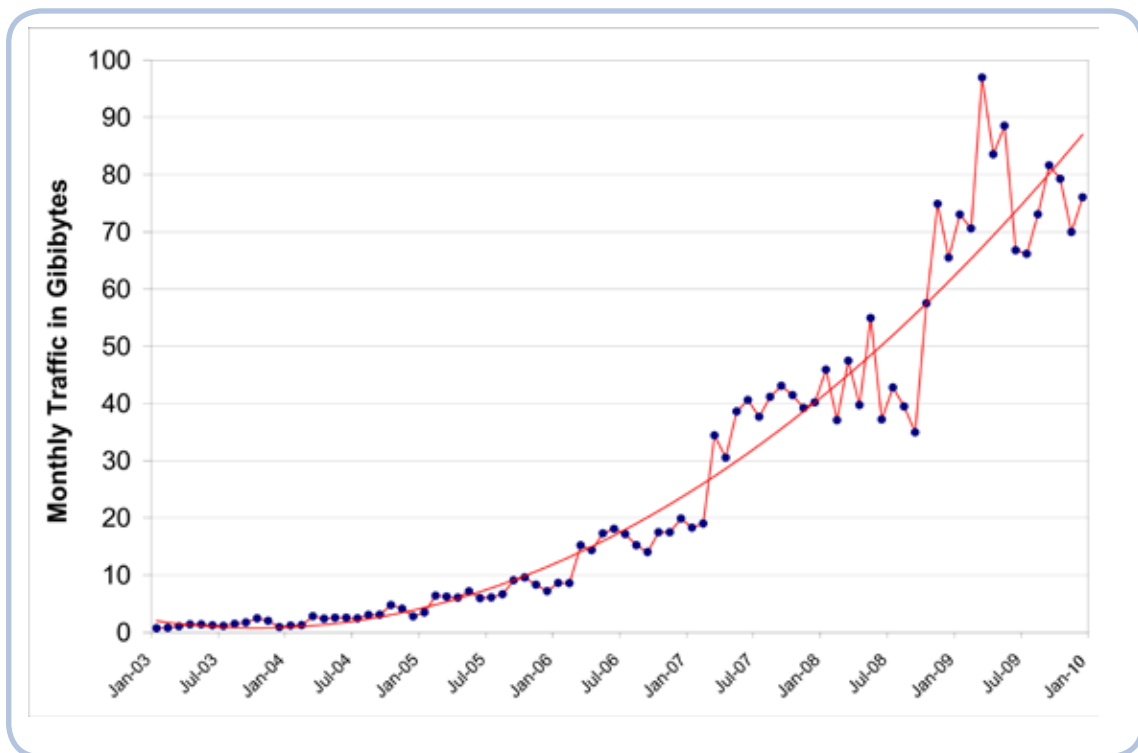
SUBMISSIONS TO GOVERNMENT INQUIRIES AND COMMITTEES

CAEPR provides independent research input to a range of organisations, the government bureaucracy and public institutions. This is reflected in submissions to inquiries detailed in Appendix D. Throughout 2009 CAEPR has also been reporting its research findings on Indigenous population analysis from a major project funded by MCATSIA to annual meetings of the Standing Committee of Aboriginal and Torres Strait Islander Affairs and MCATSIA.

PUBLIC LECTURES, SEMINARS, WORKSHOPS, AND CONFERENCES

CAEPR hosted a seminar program in 2009 with a total of 30 seminars presented. Seminars are held on Wednesdays at 12.30pm in the Humanities Conference Room, First Floor, A.D. Hope Bldg No. 14 (opposite Chifley Library). Staff made several presentations at three CAEPR workshops and the Toyota-ANU public lecture held this year, and gave 106 external conference, seminar and workshop presentations. Details of all presentations are set out in Appendix E.

Fig. 2. CAEPR web traffic, January 2003–December 2009



THE CAEPR WEBSITE

The CAEPR website is the basis of our communications strategy and is the prime vehicle for disseminating the results of our research. In a rapidly-changing Indigenous policy environment, electronic publication allows for rapid sharing of research that is often highly topical. Our web-based communication strategy continues to deliver the Centre’s research outputs to a wide and increasing audience.

The year 2009 was one of steady expansion for the CAEPR website, with continuing growth in document downloads and overall traffic (Fig.2). Total website traffic in 2009 was 925.51 gibibytes (GiB), an increase of 60 per cent over the 2008 total of 577.29 GiB. The CAEPR site recorded 5,787,964 hits over the 12-month period. A month by month summary of key web traffic indicators for 2009 is presented at Table 1, while Table 2 provides a listing of key document downloads by type.

Table 1. CAEPR web traffic, by month, 2009

	Daily Average		Monthly Total		
	Hits ^a	Visits ^b	Gibibytes ^c	Hits ^a	Visits ^b
Dec	17,129	1,680	76.04	531,008	52,094
Nov	20,919	1,945	69.98	627,585	58,354
Oct	21,968	1,903	79.25	681,008	58,995
Sep	22,490	1,850	81.62	674,718	55,516
Aug	20,349	1,368	73.06	630,839	42,437
Jul	16,860	868	66.14	522,690	26,923
Jun	24,991	1,084	66.77	749,735	32,540
May	9,969	1,148	88.52	309,041	35,617
Apr	8,814	1,038	83.55	264,441	31,164
Mar	10,473	1,049	96.96	324,676	32,534
Feb	8,885	886	70.60	248,781	24,810
Jan	7,207	702	73.02	223,442	21,772
2009	15,838	1,293	925.51	5,787,964	472,756
Percentage Change 2009/2008 (%)	119.30	33.75	60.31	122.23	35.26
2008 Full Year	7,222	967	577.29	2,604,532	349,500
2007 Full Year	6,812	1,237	424.16	2,483,670	451,260

Notes:

- Hits represent the total number of requests made to the web server during the given time period. Part of the increase in overall hits during 2009 is due to technologies associated with the new CAEPR web site.
- A visit is defined as traffic following a page request from a single remote site, and all requests from that site for thirty minutes thereafter. Since only pages will trigger a visit, remote sites that link directly to documents, sound files or other non-page URLs will not be counted in the visit totals.
- A gibibyte is a unit of data storage defined by the International Electrotechnical Commission as 2 to the 30th power, or 1,073,741,824 bytes. It is used to avoid the ambiguity associated with the term 'gigabyte', which in common usage may equal either 1,048,576 bytes or 1,000,000 bytes.

Table 2. PDF documents and podcasts downloaded from CAEPR website, 2009

Type	Downloads
Publications & Documents	
CAEPR Discussion Papers	299,787
CAEPR Working Papers	111,169
CAEPR Research Monographs ¹	44,599
Topical Issues ²	153,999
Education Futures	51,924
Project Documents	117,942
Total document downloads	773,026
Sound Files	
Podcasts (MP3)	19,118

1. Includes CAEPR Monographs No. 1-19. CAEPR Monographs No. 20-29 are published by ANU E Press, and are not included in these figures. E Press downloads are presented in Table 3.
2. As some Topical Issues link to documents hosted external to the CAEPR website, this is a partial count.

Table 3. CAEPR Monographs downloaded through ANU E Press, 2008 and 2009

Document Type	2008	2009	Increase (%)
Individual Monograph Chapters (PDF)	111,738	61,595	-44.88%
Full Monographs (PDF)	57,748	60,641	5.01%
HTML Chapter Views	28,512	23,019	-19.27%
Total document downloads	197,998	145,255	-26.64%

Site visitors enjoyed free electronic access to the entire CAEPR publications library (earlier monographs, discussion papers and working papers), as well as to topical issues, reports, seminar materials, and project documents and newsletters. Visitors can also link to media items relating to CAEPR and Indigenous affairs, and listen to or download selected audio podcasts of CAEPR seminars. Links are also provided to CAEPR monographs published by ANU E Press. A total of 773,026 PDF documents were downloaded in 2009, a 4 per cent increase on the 2008 total of 742,498 documents. Some 19,118 seminar recordings were downloaded as MP3 files in 2009.

A new and improved CAEPR website was launched in June 2009, designed and implemented by web designer Tsvetana Trifonova. The new, DRUPAL-based site features an integrated Content Management System (CMS) for data consolidation, simplified backup, administration and distributed content creation. All information is stored in a database, dynamically retrieved and composed, and presented to a user in response to a request sent through their web-browser. The new platform supports a flexible website structure and employs a taxonomy system that both simplifies and enhances content search and retrieval. A wide range of technical enhancements and additions have improved site usability and accessibility for our target audience, including those with visual or other impairments and visitors connecting to the site with mobile devices or older browsers. As well as downloading documents, website visitors may download seminar and lecture audio podcasts or listen to online streamed recordings, convert and download site pages as PDF files, subscribe to topics or categories of interest using the integrated RSS feeds or the subscription interface; and forward pages of interest using the built-in e-mail system.

A Youth and Learning project site was launched in October 2009. The pages, rich in graphics and streaming video, demonstrate the potential of the new CAEPR site design.

Recent publications from the CAEPR Research Monograph Series are available from ANU E Press at <<http://epress.anu.edu.au/>> for print sale and for free download in PDF, HTML and mobile device formats. A total of 145,255 publications or chapters were downloaded through ANU E Press in 2009 (Table 3), as well as some 44,599 older monographs from the CAEPR site, culminating in a total of 189,854 monograph downloads. Compared to the 2008 total of 228,333 monograph downloads, this represents a decrease for 2009 of some 17 per cent.

APPENDIX A. CAEPR CONSOLIDATED FINANCIAL STATEMENT

FINANCIAL SUMMARY

CAEPR made a loss in 2009 for the first time in three years. Both ANU direct support and grant income was down on the previous year while expenditure remained steady. Overall income was down by \$687,000 or 20 per cent while expenditure was reduced by only \$75,000 or 2 per cent. This meant that an annual surplus of \$338,000 at the end of 2008 was offset by a deficit in 2009 of \$274,000. CAEPR's accumulated funds therefore dropped by this deficit to \$1.832 million.

Income

Direct support from the ANU dropped by \$306,000 or 27 per cent while grant income dropped by \$321,000 or 14.6 per cent. Other income also dropped by \$61,000 and although this is not a large amount in dollar terms it does represent a significant 52 per cent drop in percentage terms. Having stated this, the 2008 and 2009 comparisons do need to be put in perspective, as grant income was high in 2008 compared to other years due to CAEPR receiving a number of multi year grants, and overall the 2009 income result compared favourably to 2007 and 2006.

Expenditure

Academic salaries went up while research assistants and administrative support salaries went down. This resulted in a reduction in salaries of \$62,000 or 2.6 per cent. At the same time consultants fees were up by \$26,000 (48.5%), scholars' expenses were down by \$4,000 (5%), travel was up by \$68,000 (33%) and other expenses were down by \$104,000 (31%). Unlike income, expenditure remained high in 2009 compared to 2007 and 2006 and this accounted for a large proportion of the deficit as costs were not reduced as grant contracts that were paid for in previous years had to be completed in 2009.

Overall

The overall accumulated funds balance returned to 2007 levels as a result of the large surplus from 2008 being spent in 2009. As long as CAEPR can maintain this level of accumulated funding into the future it will have sufficient funds to carry out its work. For this maintenance to occur income must either increase to 2008 levels with no further rise in expenditure or expenditure cut to accommodate 2009 funding levels.

Table 4. CAEPR consolidated financial statements, 2009 and 2008

INCOME	2009 (\$)	2008 (\$)
ANU Core operational support	819,970	1,125,716
Sales–publications, materials	1,751	1,196
Sales of services	12,974	25,772
Other Commonwealth grants	755,476	1,309,920
Interest income	40,917	114,302
Other grants and miscellaneous funds	1,117,896	807,062
TOTAL INCOME	2,748,695	3,435,556
EXPENDITURE		
Salaries and associated costs		
Academics	1,740,581	1,696,353
Research Assistants	367,829	415,433
Administrative	250,650	309,244
Consultants	79,938	53,580
Scholar expenses	77,862	81,933
Travel–research and conferences	274,654	206,174
Equipment–computer and other	79,889	72,318
Publications and associated costs	11,886	24,655
Operating expenses	22,037	34,711
Miscellaneous expenses	117,362	203,372
TOTAL EXPENDITURE	3,022,688	3,097,773
OPERATING RESULT	–274,029	337,868
Add accumulated surplus from beginning of year	2,106,667	1,768,883
ACCUMULATED FUNDS AT YEAR END	1,832,638	2,106,751

APPENDIX B. STAFF BALANCE

Table 5. CAEPR staff gender and employment category balance, 2009^a

Gender	Number (FTEs) ^b	Per cent	Number (people)	Per cent
Females	13.9	63.5	17	65.4
Males	8.0	36.5	9	34.6
Total	21.9	100	26	100

Classification	Number (FTEs)	Per cent	Number (people)	Per cent
Academic	14.1	64.4	15	57.7
Non-academic	7.8	35.6	11	43.7
Total	21.9	100	26	100

a. As at 31 March 2008. Excludes casual staff.
 b. FTE = full-time equivalents.

APPENDIX C. STAFF PUBLICATIONS

ALTMAN, J.C.

'A brief social history of Kuninjku art and the market', in C. Volkenandt and C. Kaufmann (eds), *Between Indigenous Australia and Europe: John Mawurndjul*, Art Histories in Context series, Reimer, Berlin, pp. 19-28.†

'Benefit-sharing is no solution to development: Experiences from mining on Aboriginal land in Australia', in R. Wynberg, D. Shroeder, and R. Chenells (eds), *Indigenous Peoples, Consent and Benefit-Sharing: Lessons from the San-Hoodia Case*, Springer, Berlin, pp. 285-302.†

'Beyond Closing the Gap: Valuing diversity in Indigenous Australia', *CAEPR Working Paper No. 54*, CAEPR, ANU, Canberra, iv+18pp.

'Brokering Kuninjku art: A critical perspective on the complex processes of mediating with the market', in C. Volkenandt and C. Kaufmann (eds), *Between Indigenous Australia and Europe: John Mawurndjul*, Art Histories in Context series, Reimer, Berlin, pp. 53-59.†

'Contestations over development', in J. Altman and D. Martin (eds), *Power, Culture, Economy: Indigenous Australians and Mining*, CAEPR Research Monograph No. 30, ANU E Press, Canberra, pp. 1-15.†

'Indigenous communities, miners and the state', in J. Altman and D. Martin (eds), *Power, Culture, Economy: Indigenous Australians and Mining*, CAEPR Research Monograph No. 30, ANU E Press, Canberra, pp. 17-49.†

'John Mawurndjul: Art and impact', *Art Monthly Australia*, 226 Summer: 22-5.†

'Manwurrk (fire drive) at Namilewoho: A land management, hunting and ceremonial event in western Arnhem Land', in J. Russell-Smith, P.J. Whitehead and P. Cooke (eds), *Managing Fire Regimes in North Australia Savannas: Ecology, Culture, Economy*, CSIRO Publishing, Collingwood, pp. 165-80.†

'The hybrid economy and anthropological engagements with policy discourse: A brief reflection', *The Australian Journal of Anthropology*, 20 (3): 318-29.†

ALTMAN, J. and ARTHUR, W.

'Commercial water and Indigenous Australians: A scoping study of licence allocations', *CAEPR Working Paper No. 57*, CAEPR, ANU, Canberra, iv+25pp.

ALTMAN, J., BIDDLE, N. and HUNTER, B.H.

'Prospects for 'closing the gap' in socioeconomic outcomes for Indigenous Australians?', *Australian Economic History Review*, 49 (3): 225-51.†

† denotes eligible for HERDC points

ALTMAN, J.C., JORDAN, K., KERINS, S., BUCHANAN, G., BIDDLE, N., ENS, E., and MAY, K.

'Indigenous interests in land and water', in P. Stone (ed.), *Northern Australia Land and Water Science Review 2009 Chapter Summaries*, Department of Infrastructure, Transport, Regional Development and Local Government, Canberra, pp. 20–21.

'Indigenous interests in land and water', in P. Stone (ed.), *Northern Australia Land and Water Science Review 2009 Full Report*, Department of Infrastructure, Transport, Regional Development and Local Government, Canberra, 56pp.

ALTMAN, J. and MARTIN, D.¹ (Editors)

Power, Culture, Economy: Indigenous Australians and Mining, CAEPR Research Monograph No. 30, ANU E Press, Canberra, xxii+239pp.

ALTMAN, J.C. and TAYLOR, L.⁴

'Articulating differences: John Mawurndjul and the creation of a distinct identity through art', in A. Kohen (ed.), *John Mawurndjul Survey 1979–2009*, Drill Hall Gallery, ANU, Canberra, pp. 9–17.

'Too many Dreamings: Diversity and change in bark paintings from west Arnhem', in C. Chubb and N. Sever (eds), *Indigenous Art at the Australian National University*, Palgrave Macmillan, Melbourne, pp. 60–100.†

BARCHAM, M.¹

'Cleaning up the Pacific: Anti-corruption initiatives', *Australian Journal of International Affairs*, 63 (2): 251–69.†

BARCHAM, M.¹, SCHEYVENS, R.⁴ and OVERTON, J.⁴

'New Polynesian triangle: Rethinking Polynesian migration and development in the Pacific', *Asia Pacific Viewpoint*, 50 (3): 322–37.†

BIDDLE, N.

'Indigenous gaps in the city', *Indigenous Law Bulletin*, 7 (14): 16–19.†

'Location and segregation: The distribution of the Indigenous population across Australia's urban centres', *CAEPR Working Paper No. 53*, CAEPR, ANU, Canberra, vi+38pp.

'Location or qualifications? Revisiting Indigenous employment through an analysis of census place-of-work data', *CAEPR Working Paper No. 61*, CAEPR, ANU, Canberra, viii+30pp.

'Ranking regions: Revisiting an index of relative Indigenous socioeconomic outcomes', *CAEPR Working Paper No. 50*, CAEPR, ANU, Canberra, vi+30pp.

'Ranking regions: Revisiting an index of relative socioeconomic outcomes', *Australasian Journal of Regional Studies*, 15 (3).[‡]

'Same suburb, different worlds: Comparing Indigenous and non-Indigenous outcomes in city suburbs and large regional towns', *People and Place*, 17 (2): 56–63.[‡]

'The geography and demography of Indigenous migration: Insights for policy and planning', *CAEPR Working Paper No. 58*, CAEPR, ANU, Canberra, vi+32pp.

BIDDLE, N., DAVIS, E.⁴, MYERS, J.⁴ and SOORINARAIN DODHY, R.⁴

Exploring Measures of Low Social Capital, ABS Research Paper, cat. no. 1351.0.55.024, ABS, Canberra, 59pp.

BIDDLE, N. and PROUT, S.

'Indigenous temporary mobility: An analysis of the 2006 Census snapshot', *CAEPR Working Paper No. 55*, CAEPR, ANU, Canberra, vi+25pp.

BIDDLE, N. and TAYLOR, J.

'Planning for growth: Indigenous population projections, 2006–31', *CAEPR Working Paper No. 56*, CAEPR, ANU, Canberra, vi+26pp.

BIDDLE, N., TAYLOR, J. and YAP, M.

'Are the gas closing?—Regional trends and forecasts of Indigenous employment', *Australian Journal of Labour Economics*, 12 (3): 263–80.[‡]

BRADY, M.

The Grog Book. Strengthening Indigenous Community Action on Alcohol, Update and second reprint of 2005 revised edition, Department of Health and Ageing, Canberra.

BUCHANAN, G. with ALTMAN, J.C., ARTHUR, B., OADES, D. and the BARDI JAWI RANGERS

'Always part of us': The Socioeconomics of Indigenous Customary Use and Management of Dugong and Marine Turtles—A View from Bardi and Jawi Sea Country, Western Australia, NAILSMA Knowledge Series 001/2009, Research Report, NAILSMA, Darwin, 100pp.

CHAPMAN, B.² and HUNTER, B.H.

'Exploring creative applications of income contingent loans', *Australian Journal of Labour Economics*, 12 (2): 133–44.[‡]

EDWARDS, B.⁴, GRAY, M.C.¹, BAXTER, J.⁴ and HUNTER, B.H.

The Tyranny of Distance? Carers in Regional and Remote Areas of Australia, Commonwealth of Australia and Carers Australia, Canberra, xii+40pp.

EDWARDS, B.⁴, GRAY, M.C.¹ and HUNTER, B.H.

'A sunburnt country: The economic and financial impact of drought on rural and regional families in Australia in an era of climate change', *Australian Journal of Labour Economics*, 12 (1): 109–31.†

ENS, E., VALLANCE, G.⁴, NAMUNDJA, S.⁴, GARLINGARR, V.⁴, GURWALWAL, B.⁴, COOKE, P.⁴ and MCKENZIE, K.²

'Catching Kordbolbok: From frog survey to closing the gap in Arnhem Land, northern Australia, through Indigenous and non-Indigenous collaboration', *CAEPR Working Paper No. 59*, CAEPR, ANU, Canberra.

GRAY, M.C.¹ and HUNTER, B.H.

'Families through life: Selected issues for labour economists', *Australian Journal of Labour Economics*, 12 (1): 1–4.†

HOLCOMBE, S.¹

'Indigenous entrepreneurialism and mining land use agreements', in J. Altman and D. Martin (eds), *Power, Culture, Economy: Indigenous Australians and Mining*, CAEPR Research Monograph No. 30, ANU E Press, Canberra, pp. 149–69.†

HUNT, J., ALTMAN, J.C. and MAY, K.

'Social benefits of Aboriginal engagement in natural resource management', *CAEPR Working Paper No. 60*, CAEPR, ANU, Canberra, xvi+74pp.

HUNTER, B.H.

'A half hearted defense of CDEP scheme', *Family Matters*, 81: 43–54.†

'Indigenous social exclusion: Insights and challenges for the concept of social inclusion', *Family Matters*, 82: 52–61.†

HUNTER, B.H. and AYYAR, A.

'Some reflections on the quality of administrative data for Indigenous Australians: The importance of knowing something about the unknown(s)', *CAEPR Working Paper No. 51*, CAEPR, ANU, Canberra, ii+25pp.

HUNTER, B.H. and JORDAN, K.

'Explaining social exclusion: Towards social inclusion for Indigenous Australians', *Social Justice Discussion Paper No. 3*, The Social Justice Initiative, The University of Melbourne, 20pp.

JACKSON, S.⁴ and ALTMAN, J.C.

'Indigenous rights and water policy: Perspectives from tropical north Australia', *Australian Indigenous Law Review*, 13 (1): 27–48.†

KERINS, S.

'The first ever Northern Territory homelands/outstations policy', *Indigenous Law Bulletin*, 7 (14): 7–10.†

KRAL, I.

Ngaanyatjarra Picture Dictionary, Revised edition, IAD Press, Alice Springs.

LEVITUS, R.¹

'Aboriginal organisations and development: The structural context', in J. Altman and D. Martin (eds), *Power, Culture, Economy: Indigenous Australians and Mining*, CAEPR Research Monograph No. 30, ANU E Press, Canberra, pp. 73–97.†

MARTIN, D.F.¹

'The governance of agreements between Aboriginal people and resource developers: Principles for sustainability', in J. Altman and D. Martin (eds), *Power, Culture, Economy: Indigenous Australians and Mining*, CAEPR Research Monograph No. 30, ANU E Press, Canberra, pp. 99–126.†

MORPHY, F. and MORPHY, H.²

'The Blue Mud Bay case: Refractions through saltwater country', *Dialogue*, 28 (1): 15–25. (Also published as CAEPR Topical Issue 2009/07.)

PROUT, S.

'Policy, practice and the "revolving classroom door": Examining the relationship between Aboriginal spatiality and the mainstream education system', *Australian Journal of Education*, 53 (1): 39–53.†

'Security and belonging: Reconceptualising Aboriginal mobilities in Yamatji country, Western Australia', *Mobilities*, 4 (2): 177–202.†

'Vacuums and veils: Engaging with statistically "invisible" Indigenous population dynamics', *Geographical Research*, 47 (4): 408–21.†

PROUT, S. and HOWITT, R.⁴

'Frontier imaginings and subversive Indigenous spatialities', *Journal of Rural Studies*, 25 (4): 396–403.†

SANDERS, W.

Anmatjere Through the Census: Profiling an Arid Zone Region, DKCRC Working Paper 64, DKCRC, Alice Springs.

Fueling Large Group Dominance and Repeating Past Mistakes: A Critique of the Northern Territory Local Government Electoral System, DKCRC Report 59, DKCRC, Alice Springs, iv+29pp.

'Ideology, evidence and competing principles in Australian Indigenous affairs: From Brough to Rudd via Pearson and the Northern Territory Emergency Response', *CAEPR Discussion Paper No. 289*, CAEPR, ANU, Canberra, iv+26pp.

'Writing Indigenous affairs: Diverse and innovative approaches', *Australian Journal of Political Science*, 44 (4): 737–40.†

SCAMBARY, B.¹

'Mining agreements, development, aspirations and livelihoods', in J. Altman and D. Martin (eds), *Power, Culture, Economy: Indigenous Australians and Mining*, CAEPR Research Monograph No. 30, ANU E Press, Canberra, pp. 171–201.†

TAYLOR, J.

'Data mining: Indigenous peoples, applied demography and the resource extraction industry', in J. Altman and D. Martin (eds), *Power, Culture, Economy: Indigenous Australians and Mining*, CAEPR Research Monograph No. 30, ANU E Press, Canberra, pp. 51–71.†

'Indigenous demography and public policy in Australia: Population or peoples?', *Journal of Population Research*, 26: 115–30.†

'Social engineering and Indigenous settlement: testing the demographic implications of policy prescriptions in remote Australia', *Australian Aboriginal Studies*, 2009/1: 4–16.†

TREBECK, K.¹

'Corporate responsibility and social sustainability: Is there any connection?', in J.C. Altman and D. Martin (eds), *Power, Culture, Economy: Indigenous Australians and Mining*, CAEPR Research Monograph No. 30, ANU E Press, Canberra, pp. 127–47.†

YAP, M. and BIDDLE, N.

'Towards a gender related index for Indigenous Australians', *CAEPR Working Paper No. 52*, CAEPR, ANU, Canberra, vi+33pp.

BOOK REVIEWS

ALTMAN, J.C.

'The boy from Hope Vale', A review of *Up From The Mission: Selected Writings*, by Noel Pearson, *Australian Book Review*, July-August: 40-41.

'What "Liberal Consensus"? A review of *The Politics of Suffering: Indigenous Australia and the End of Liberal Consensus*', by Peter Sutton, newmatilda.com, 16 July.

BRADY, M.

Review of *Bennelong's Haven. Recovery from Alcohol and Drug Abuse within an Aboriginal Australian Residential Treatment Centre* by R. Chenhall, *The Australian Journal of Anthropology*, 20 (3).

APPENDIX D. PUBLISHED COMMENTARIES, WEB-BASED PAPERS AND UNPUBLISHED REPORTS

ALTMAN, J.C.

'Ernest Kelvin (Fred) Fisk 1917–2009', *Annual Report 2009 Academy of the Social Sciences*, pp. 86–89.

'Measuring what matters', *Australia Institute Newsletter*, 60: 3–4.

Submission to the Finance and Public Administration Senate Inquiry into the Nation Building and Jobs Plan, February.

Submission to Australian Government Department of Resources, Energy and Tourism on Enhancing Australia's Economic Prosperity, Energy White Paper, June, 2pp.

Submission to FaHCSIA on 'Possible housing and infrastructure native title amendments' Discussion Paper by Attorney-General's Department and FaHCSIA, September, 2pp.

Submission to the Senate Legal and Constitutional Committee on Native Title Amendment Bill (No. 2) 2009, November, 3pp.

'Developing a national Indigenous policy framework that recognises needs, rights and legacies and delivers results', CAEPR Topical Issue 02/2009, April, 13pp.

'Understanding Maningrida's High Court challenge', *Arena Magazine*, 99: 6–7.

ALTMAN, J.C. and ARTHUR, W.¹

Water Licences and Allocations to Indigenous People for Commercial Purposes: An Australia-wide Scoping Exercise, Report prepared for the National Water Commission, February.

ALTMAN, J., BIDDLE, N. and JORDAN, K.

Contributing authors to 'Climate change impacts on livelihoods', in D. Green, S. Jackson and J. Morrison (eds), *Risks from Climate Change to Indigenous Communities in the Tropical North of Australia*, Department of Climate Change, Canberra, pp. 66–75.

ALTMAN, J.C. and JORDAN, K.

'Brief commentary in response to the Australian Government Discussion Paper "Optimising Benefits from Native Title Agreements" and the report of the Native Title Payments Working Group', Submission to FaHCSIA, Topical Issue 03/2009, May, 9pp.

'Submission to the House of Representatives Standing Committee on Aboriginal and Torres Strait Islander Affairs Inquiry into Community Stores in Remote Aboriginal and Torres Strait Islander Communities', CAEPR Topical Issue 04/2009, May, 11pp.

'The untimely abolition of the Community Development Employment Program', Submission to Senate Community Affairs Committee Inquiry into the Family Assistance and Other Legislation Amendment (2008 Budget and Other Measures) Bill 2008, Topical Issue 05/2009, May, 8pp.

ALTMAN, J.C., JORDAN, K., MUNRO, I.⁴, RYAN, M.⁴ and MIRIKUL, M.⁴

'Maningrida region, Arnhem Land, Northern Territory', in D. Green, S. Jackson and J. Morrison (eds), *Risks from Climate Change to Indigenous Communities in the Tropical North of Australia*, Department of Climate Change, Canberra pp. 99–106.

ALTMAN, J.C., KERINS, S. ENS, E., BUCHANAN, G. and MAY, K.

'Submission to the Review of the National Biodiversity Strategy: Indigenous people's involvement in conserving Australia's biodiversity', Topical Issue 08/2009, June, 11pp.

BIDDLE, N.

Association Between Measures of Low Social Capital and Aspects of Well-Being, Report for ABS, September, 51pp.

Population Movement in the Tropical North, Report for Department of Climate Change, January, 11pp.

Population Projections in the Tropical North, Report for Department of Climate Change, February, 12pp.

Port Hedland and the Pilbara Region, Report for Department of Climate Change, March, 15pp.

Population projections for select New South Wales towns/communities, Report for Department of Aboriginal Affairs (New South Wales), July 12pp.

BIDDLE, N. and HUNTER, B.H.

Migration, labour demand, housing markets and the drought in regional Australia, Report for the Australian Institute of Family Studies, May, 53pp.

BIDDLE, N. and MACKAY, S.³

Understanding the educational marginalisation of Indigenous Australians: Extent, processes and policy responses, UNESCO Global Monitoring Report, May, 59pp.

BRADY, M.

Expert Report in Relation to Provisional Removal Application 280999 Hotel Licence no 111274, Prepared on behalf of Gilgandra Local Aboriginal Land Council (Objectors to the application), May.

BUCHANAN, G.

Harvest Studies in Hybrid Economies: Exploring the Socioeconomics of Customary Wildlife Use and Implications for Economic Development in Remote Indigenous Australia, unpublished Master of Geographical Sciences sub-thesis, FSES, ANU, Canberra.

Indigenous People's Customary use of Wild Resources in the Broome/Dampier Peninsula Region: A Desktop Study for the Kimberley Land Council Aboriginal Social Impact Assessment, December, 39pp.

BULLOCH, H.

Indigenous Freshwater Rights Topic Guide, 21pp., available at
<http://www.anu.edu.au/caepr/country/doc/Topic_Guide_Water.pdf>

ENS, E.

Collecting Traditional Bush Tucker, Manbulkung, near Kabulwarnamyo, Report to Warddeken LML, November, 7pp.

Djelk Billabong and Feral Animal Damage Monitoring: Information and Instruction Guide, Report to Djelk Rangers, October, 6pp.

Freshwater Billabong Monitoring and Protection from Feral Animals, Report prepared with Yugul Mangi Rangers for Community and Greening Australia NT, August, 15pp.

Yirralka Rangers Cybertracker guide, October, 9pp.

ENS, E. and COOKE, P.⁴

Warddeken IT User Guide, Prepared for Warddeken LML, August, 11pp.

ENS, E. with DJELK and WARDDEKEN RANGERS⁴

Western and Central Arnhem Land Grassy Weed Strategy, Prepared with Djelk and Warddeken Rangers, April, 34pp.

ENS, E., M. KALKIWARRA, M.⁴, NAMARNYILK, S.⁴, NAMUNDJA, S.⁴, TOWLER, G.⁴ and VALLANCE, G.⁴

Collecting Plants in the Warddeken IPA, Report prepared for Warddeken LML, October, 4pp.

ENS, E. and KERINS, S.

Management Strategy for Feral Pigs (*Sus scrofa*) in the Laynhapuy Indigenous Protected Area, North East Arnhem Land, Australia 2009–2011, Prepared with and for traditional owners from Laynhapuy homelands for the Laynhapuy Homelands Association, May, 24pp.

FORDHAM, A.³, FOGARTY, W., and FORDHAM, D.⁴ with assistance from SCHWAB, J., COREY, B.⁴, SCHOLES, M.⁴, WILLIAMS G.⁴ and RAVEN, R.⁴

Knowledge Foundations for the Development of Sustainable Wildlife Enterprises in Remote Indigenous Communities of Australia, Report to Bawinanga Aboriginal Corporation, Canberra, August, 64pp.

HUNT, J.

Submission to the Department of the Environment, Water, Heritage and the Arts (DEWHA) Indigenous Heritage Law Reform Discussion Paper August 2009, November, 5pp.

Submission to House of Representatives Standing Committee on Aboriginal and Torres Strait Islander Affairs Inquiry into Indigenous juveniles and young adults in the criminal justice system, December, 5pp.

HUNT, J., ALTMAN, J.C. and MAY, K.

Social Benefits of Aboriginal Engagement in Natural Resource Management, Report to the Natural Resource Advisory Council, Sydney, July, 130pp.

HUNT, J. and MACKAY, S.³

'Native title and Joint Management arrangements for protected areas in New South Wales', Paper contributed to AIATSIS Native Title website, available at

<http://ntru.aiatsis.gov.au/major_projects/nativetitle_land&water.html#jointmment>.

HUNTER, B.H.

'Prospects for closing the gap in a recession: Revisiting the role of macroeconomic factors in Indigenous employment', CAEPR Topical Issue 01/2009, April, 15pp.

JACKSON, S.⁴, TAN, P-L.⁴ and ALTMAN, J.C.

Indigenous Freshwater Planning Forum: Proceedings, Outcomes and Recommendations, Report for the National Water Commission, March, 33pp., available at

<http://www.nwc.gov.au/resources/documents/Indigenous_Fresh_Water_Planning_Forum_outcomes.pdf>.

JORDAN, K. and HUNTER, B.H.

'Indigenous social exclusion and inclusion: What are people to be included in, and who decides?', *Impact Magazine*.

KERINS, S.

Submission to the consultation draft of Australia's Strategy for The National Reserve System 2008-2030, February.

'The first-ever Northern Territory homelands/outstations policy', CAEPR Topical Issue 09/2009, December, 8pp.

Time To Put Some Meat On The Bones? Looking Back on 4 Years of Land Management by the Garawa and Waanyi Rangers in the Gulf of Carpentaria, Report to Garawa and Waanyi traditional owners, October, 18pp.

KRAL, I.

'Literacy in remote Indigenous Australia', CAEPR Topical Issue 2009/06, May, 6pp.

'How do we make sense of the literacy debate in remote Indigenous Australia?', *Australian Education Union NT Newsletter*, May.

'The literacy question in remote Indigenous Australia', Friends of Bilingual Learning website, 4pp.

MAY, K. (Ed.)

People on Country 2008 Annual Report, December, 47pp., available at <http://www.anu.edu.au/caepr/country/research.php#reports>.

People on Country Newsletter, 1 (1) and (2), July and November, 4pp., available at <http://www.anu.edu.au/caepr-old/country/index.php>.

SANDERS, W.

'Working Future': A Critique of Policy by Numbers, Draft report for Central Land Council, October, 44pp.

TAYLOR, J.

Issues Related to the Measurement of Population Change in the Kimberley and Dampier Peninsula, Report to the Kimberley Land Council, Broome.

An Index of Indigenous Socioeconomic Outcomes in the Kimberley Region, Report to the Kimberley Land Council, Broome.

'Comments on the demographic profile of the Indigenous population in the Report, A Baseline Community Profile of the Groote Eylandt and Bickerton Island Communities of Angurugu, Umbakumba and Milyakburra', A Report to the Anindilyakwa Land Council, Groote Eylandt.

TAYLOR, J. and DERMODY, P.⁴

A Strategic Assessment of Educational Needs in the Thamarrurr Region, A Report to the Australian Human Rights Commission Working Group on the Assessment of Education Needs at the OLSH Thamarrurr Catholic School, Wadeye, October.

VARIOUS

Communiqué to the Prime Minister on Outstations/Homelands Policy, by participants of the joint Academy of the Social Sciences in Australia (ASSA)/Centre for Aboriginal Economic Policy Research (CAEPR) Forum on Homelands and Outstations, 27-28 October 2009, November, 1pp., available at <http://www.anu.edu.au/caepr-old/country/research.php#submissions>

-
1. Former staff member or visitor to CAEPR.
 2. Member of another part of ANU.
 3. Visitor to CAEPR.
 4. Member of another university/organisation.

APPENDIX E. PUBLIC LECTURES, SEMINARS, WORKSHOPS, CONFERENCES

TOYOTA–ANU PUBLIC LECTURE

INDIGENOUS AUSTRALIANS AND MINING: DEVELOPING A SUSTAINABLE FUTURE?

Dr Richard Denniss, Executive Director, The Australia Institute launched *Power, Culture, Economy: Indigenous Australians and Mining*, CAEPR Research Monograph No. 30, published by ANU E Press on 26 August. The launch was followed by a forum with Professor Jon Altman, Dr David Martin, Dr Sarah Holcombe (National Centre for Indigenous Studies, ANU) and Dr Ben Scambary (Aboriginal Areas Protection Authority, Northern Territory).

CAEPR WORKSHOPS

INDIGENOUS RIGHTS WORKSHOP

Together with the School of Archaeology and Anthropology, CAEPR hosted a workshop in August titled *The Limits to the Recognition of Distinctive Rights for Indigenous People* with Professor Sachiko Kubota (Hiroshima University), Professor Shigenobu Sugito (Sugiyama University), Associate Professor Hiroki Takakura (Tohoku University) and Dr Junko Maruyama (Kyoto University). This comparative project is examining the limits to the recognition of distinctive right for indigenous people across three different kinds of states, and the way in which the recognition of rights is reflected in policy and changes in policy overtime. Jon Altman made a presentation to the workshop titled 'The NTER Intervention two years on: Reflections on short-term and long-term impacts of the state project of improvement'.

YOUTH LEARNING SYMPOSIUM

As part of the ARC Linkage project 'Lifespan Learning and Literacy for Young Adults in Remote Indigenous Communities' (undertaken with Fred Hollows Foundation as industry partner), Inge Kral and Jerry Schwab convened a Youth Learning Symposium in Darwin over 14–17 September. The Symposium brought together researchers, youth participants and facilitators from the key research sites of the project, as well as invitees from youth-oriented fields, including government, NGOs, academia, libraries and education. It comprised a three-day workshop preparing films and presentations with youth researchers and a one-day public symposium held at the Darwin Convention Centre. The Symposium was facilitated by Mr Joe Ross. Professor Shirley Brice Heath (Brown and Stanford Universities), CAEPR Visitor, presented a keynote address on 'Youth learning in the international

context'. Professor Martin Nakata presented a concluding session. Inge and Jerry prepared five symposium presentations:

- Youth learning
- Enterprise and organisational learning
- Learning, community, culture and identity: a conversation
- Language and literacy
- Arts: multimedia, music and theatre.

HOMELANDS/OUTSTATIONS WORKSHOP

CAEPR convened a two-day workshop Homelands/Outstations and the Environmental and Strategic Management of Australia, on 27-28 October generously supported by the ASSA and CAEPR's Visiting Indigenous Fellowship scheme which provided funding for Indigenous representatives to come to Canberra and participate. This workshop brought together outstations residents, academics and practitioners to discuss the future of outstations, the impact of recent government policy, and the lack of adequate funding for services for these 1,000 small remote and dispersed Indigenous communities across Australia. The forum was held at the ANU and brought together Indigenous representatives from outstations/homeland communities, Aboriginal organisations and resource agencies, academics and other experts, including health and education professionals. A Communiqué drafted and sent to Prime Minister Rudd is available at <<http://www.anu.edu.au/caepr-old/country/research.php#submissions>> .

CAEPR staff made several presentations:

- Influencing the Australian state on homelands/outstations, by Jon Altman
- Outstation education—At a cross roads?, by Bill Fogarty
- Literacy and social practice in the remote Indigenous context, by Inge Kral
- Overview on cultural and environmental resource management and outstations, by Nanni Concu
- Briefing, by Emilie-Jane Ens
- Homelands/outstations and the provision of environmental services in the Northern Territory, by Sean Kerins

AUSTRALIAN ANTHROPOLOGICAL SOCIETY CONFERENCE

CAEPR assisted the 2009 annual meeting of the Australian Anthropological Society, The Ethics and Politics of Engagement, held in Sydney in December. Professor Jon Altman and Dr Melinda Hinkson, School of Archaeology and Anthropology, ANU convened a session, Crisis of Culture: Anthropology and the Politics of Engagement in Aboriginal Australia. The session included a Plenary co-sponsored by CAEPR featuring Professor Marcia Langton from University of Melbourne and Professor Elizabeth Povinelli from Columbia University. These proceedings will be published as a book 'Culture Crisis: Anthropology and Politics in Aboriginal Australia', by UNSW Press in 2010.

CAEPR SEMINARS

First semester—Seán Kerins and Kirrily Jordan, convenors

February

Modelling Indigenous affairs: A modified advocacy coalition approach, Michael Jones, CAEPR Summer Scholar

March

Fresh water in the Maningrida region: Ameliorating intercultural contestation over values and property rights, Jon Altman, CAEPR

'Now We Can See Our Song': When the oral/aural becomes visual. Animation and the cross-generational transfer of knowledge, John Bradley

Indigenous Australians in the city: Urbanisation and segregation, Nicholas Biddle, CAEPR

Language for land management, Murray Garde, School of Languages and Linguistics, University of Melbourne

April

From 'Close The Gap' to the Rudd Government's 'closing the gap': What gap are we closing?, David Cooper, Australians for Native Title and Reconciliation in conversation with Jon Altman, CAEPR

Measuring income-related inequalities in self-assessed health, Casey Quinn, School of Community Health Sciences, University of Nottingham

The benefits of Caring for Country in NSW, Janet Hunt, CAEPR

Land as 'third space': Towards an educational and social re-engagement of Indigenous youth in remote Australia, Jerry Schwab and Bill Fogarty, CAEPR

Caring For Country: Building from the bottom-up, Jack Green and Donald Shadforth, Senior Garawa and Waanyi traditional owners and Visiting Indigenous Fellows, CAEPR

The significance of the UN Declaration on the Rights of Indigenous Peoples, Megan Davis, Visiting Indigenous Fellow, CAEPR

May

Fueling large group dominance: A critique of the Northern Territory local government electoral system, Will Sanders, CAEPR

Market researching 'reconciliation': The Australian Reconciliation Barometer, Tim Rowse, Professorial Fellow, Centre for Citizenship and Public Policy, University of Western Sydney and Visiting Fellow, CAEPR

Harvest studies in hybrid economies, Geoff Buchanan, CAEPR

June

'Buffalo talk': Developing Indigenous ranger environmental services 'capacity' in Arnhem Land, Emilie Ens, CAEPR

Well-being and Indigenous Australians, Kirrily Jordan, Geoff Buchanan, Hannah Bulloch, CAEPR

Donald Rumsfeld and the quality of Indigenous administrative data, Boyd Hunter, CAEPR

Second semester—Katherine May and Mandy Yap, convenors**September**

An analysis of Indigenous labour market outcomes, John Salerian and Maurice Glover, Productivity Commission

'Working Future': A critique of policy by numbers, Will Sanders, CAEPR

Indigenous population projections to 2031: A test of policy impacts, John Taylor and Nicholas Biddle, CAEPR

The socio-demography of the Fitzroy Valley Aboriginal population, Frances Morphy, CAEPR

October

Three myths about urban Aboriginal people in Canadian cities, Evelyn Peters, University of Saskatchewan

Indigenous children's literacy and schooling: A case study of a contemporary Orang Asli Community in Malaysia, Sumathi Renganathan, CAEPR

The development of sustainable wildlife enterprises in remote Indigenous communities of Australia, Adrian Fordham and Bill Fogarty, CAEPR

Why won't they talk with us?' Aboriginal perspectives on their engagement with governments, Annie Kennedy, Southern Cross University

Harnessing assets of advantage, Meg Switzer, ASM and associates Pty Ltd and Nicholas Hall, Stepwise Heritage and Tourism Pty Ltd

November

Amending the APY Land Rights Act in 2004, 2005 and 2006: Petrol sniffing and the contribution of the Coroner in catalysing change, Deirdre Tedmanson, CAEPR

A psycho-social approach to development: the theoretical basis of community empowerment organising in the Pacific, Richard Barcham, CAEPR

EXTERNAL PRESENTATIONS

Jon Altman

'A racist Intervention', Presentation for Convergence on Canberra public form, Canberra, February.

Launch of Black Politics by Sarah Maddison, co-launcher with Tom Calma, Manning Clark House, Canberra, February.

'Beyond Closing the Gap: Valuing diversity in Indigenous Australia', Values and Public Policy: Fairness, Diversity and Social Change conference, Centre for Public Policy, Melbourne, February.

'Water licences and allocations to Indigenous people for commercial purposes: An Australia wide scoping exercise', Paper presented to Indigenous Water Planning Forum, National Water Commission, Adelaide, February.

'Developing a national Indigenous policy framework that recognises needs, rights and legacies and delivers results', Presentation at Building a Fair Australia in Tough Economic Times, ACOSS National Conference, April, Sydney.

Presentation at the Nillumbik Reconciliation Group and Eltham Bookshop Symposium The Past Matters: An Appreciation of Difference, May, Melbourne.

'Still searching for a credible outstations policy for the NT', Presentation to School of Environmental Research Seminar Series, Charles Darwin University, Darwin, June.

'Still searching for a credible outstations policy for the NT', Seminar presented to Central Land Council, Alice Springs, July.

Panel member, Managing creative industries in a changing environment: Has the intervention impacted on Indigenous creativity in the Northern Territory?, Creative Industries Key Forum, Garma Festival, Gulkula, Northern Territory, August.

'How relevant are local benefits to the effectiveness of REDD?', RMAP Argument, Resource Management in Asia-Pacific Program, ANU, September.

'John Mawurndjul: His arts practice and its artistic impact', Melbourne Art Foundation 2009 Artist Award, Art Gallery of NSW, Sydney, September.

'The hybrid economy as a political project: Reflections from the Indigenous estate', Keynote speech at Indigenous Participation in Australian Economies: Perspectives from Anthropology, History and Material Culture Studies conference, Canberra, November.

'From Kunnanj (Fish Creek) to Mumeka (Mann River): Hunter-gatherer tradition and transformation in Western Arnhem Land, 1948–2009', Presentation at Barks, Birds & Billabongs: Exploring the Legacy of the 1948 American–Australian Scientific Expedition to Arnhem Land, International Symposium, Canberra, November.

'Commodification of environmental knowledge: Alternate development for the Australian Indigenous estate', Presentation at the Department of Social Anthropology, Cape Town University, South Africa, November.

'Education for diverse development futures: Challenges in remote Australia', Paper co-authored with W. Fogarty presented to Closing the Gap in Education: Improving Outcomes in Southern World Multicultural Societies Conference, Monash South Africa Campus, Johannesburg, November.

Co-convenor and co-chair, 'Crisis of culture: Anthropology and the politics of engagement in Aboriginal Australia', The Ethics and Politics of Engagement conference, Australian Anthropological Society, Sydney, December.

'Alternative development for remote Indigenous Australia: Economic hybridity and the neoliberal turn', Paper presented at 'Crisis of culture: Anthropology and the politics of engagement in Aboriginal Australia', The Ethics and Politics of Engagement conference, Australian Anthropological Society, Sydney, December.

'Appropriate state patronage and the development of an Indigenous arts economy: Lessons from Australia, good and bad, since the 1970s', Paper to be presented at PNG Sustainable Cultural Economy workshop, National Museum of Australia, December.

Jon Altman, Geoff Buchanan, Kirrily Jordan, Seán Kerins

Participants and contributors, Indigenous Land and Water Uses in Northern Australia workshop, CSIRO, Canberra, August.

Nicholas Biddle

'MCATSIA Population Project: Select findings, issues and implications', Presentation to South Australia State government departments, Adelaide, February.

'Indigenous Australians in the city: Urbanisation and segregation', Paper presented to Aboriginal Policy Research Conference, Ottawa, March.

'Evaluating population and socioeconomic dynamics', Paper presented to Engaging Indigenous Communities, 4th Engaging Indigenous Communities Conference, Liquid Learning, Brisbane, April.

Participant, Indigenous Demography Workshop, ABS, Canberra, April.

'Education participation and Indigenous population projections', Presentation at States & Territories Workshop on COAG Targets & Trajectories, Canberra, May.

Contributor, Indigenous Economic Development Workshop, FaHCSIA, June.

'Urban Indigenous Australians: Socioeconomics, segregation and inclusion', Paper presented to An Inclusive Society: Practicalities and Possibilities, Australian Social Policy Conference, Sydney, July.

'Disaggregating the urban Indigenous population: The processes and impacts of residential segregation', Paper presented to Perspectives on Urban Life: Connections and Reconnections, AIATSIS Conference, Canberra, September.

Maggie Brady

'"We wasn't allowed in the hotel": The impact of the hotel in past, present and (imagined) future patterns of Aboriginal drinking', Invited speaker at Bureau of Crime Statistics and Research 40th Anniversary Symposium, Sydney, February.

Participant, Residential Alcohol Treatment Program Planning Workshop with delegation from Normanton and NW Queensland Primary Health Care Association, Canberra, June.

'Sweetness and poison: Learning from a history of extremes in Indigenous alcohol policy and practice', Plenary speech for Hands Across the Desert conference, Central Australian Alcohol and other Drugs Inter Agency Group, Alice Springs, August.

Panel member, Open Forum on Alcohol Restrictions in Indigenous Communities, at the Indigenous Law Centre, University of New South Wales, Sydney, September.

'Clubs, pubs, or the pink line? Managing Aboriginal drinking', Living on the Edge conference, Australian Professional Society on Alcohol and other Drugs, Darwin, November.

Facilitator, Workshop on the establishment of a Drug and Alcohol Rehabilitation facility at Normanton, Queensland, June.

Geoff Buchanan

'Harvest studies in hybrid economies: exploring the socioeconomics of customary wildlife use in Indigenous Australia and implications for development', Master of Geographical Sciences Sub-Thesis final presentation, FSES, ANU, Canberra, January.

'An Indigenous green new deal: People on Country, healthy landscapes and Indigenous economic futures', and 'Indigenous demography: Population, location, diversity, and democracy', Presentations to Kooma Green School 2009, Kooma Traditional Owners Association and the Green Institute, Murra Murra, September.

'Mutant modernity Down Under? Country, culture, economy and the challenges of development in remote Indigenous Australia', Anthropology Friday Seminar Series, School of Archaeology and Anthropology, ANU, September.

'The customary use of wildlife in community food economies in remote Indigenous Australia', Paper presented at Balancing Choices and Effects in a Dynamic World conference, Institute of Australian Geographers Conference, James Cook University, Cairns, September.

'An Indigenous green new deal', Presentation with Cheryl Buchanan (Kooma traditional owner) and Major Sumner (Ngarrindjerri elder), Green New Deal Conference, University of Melbourne, Melbourne, October.

Discussant, 'Art and identity production among urban Aboriginal and Torres Strait Islander artists in Cairns, Queensland', Pre-field Seminar by Gretchen Stolte, PhD Candidate, School of Archaeology and Anthropology, ANU, Canberra, November.

'Animal spirits in the Dreaming and the Market: The economic development of caring for country', Presentation at the Indigenous Participation in Australian Economies: Perspectives from Anthropology, History and Material Culture Studies conference, Canberra, November.

Nanni Concu

'Options for developing a natural-resource based economy in Arnhem Land: Payments for environmental services', Paper presented the Indigenous Participation in Australian Economies: Perspectives from Anthropology, History and Material Culture Studies conference, Canberra, November.

Emilie-Jane Ens

'Combining Indigenous and western ecological knowledge: Monitoring feral buffalo impacts on remote Arnhem Plateau wetlands', Paper presented (with P. Cooke, V. Galangar, R. Nadjamerrek, S. Namundja and D. Yibarbuk) to Ecology in a Changing Climate: Two Hemispheres—One Globe, 10th International Congress of Ecology, Brisbane, August.

'Recent ecological research with Indigenous Rangers', Presentation with Ms Gillian Towler at Barks, Birds & Billabongs: Exploring the Legacy of the 1948 American–Australian Scientific Expedition to Arnhem Land, International Symposium, Canberra, November.

Janet Hunt

'How to define poverty, well-being and development: The values we bring to the task and a reflection on measurement in relation to Indigenous people', Paper presented at the initial workshop of international ARC project Gender-Sensitive Poverty Measures and Poverty-Sensitive Gender Measures in Oslo, Norway, March.

Facilitator, Oxfam's Indigenous Women's Straight Talk workshop, Canberra, March.

'Research activities in NRM', Workshop presented (with V. Cavanagh) at Aboriginal Women and NRM Conference, Nelson Bay, May.

Facilitator, Indigenous Working Group Workshop, Australian Council for International Development, Canberra, May.

'Socioeconomic benefits of Working on Country for Aboriginal people in NSW', Presentation to DECCW, December, Sydney.

Janet Hunt, Diane Smith

Presented Governance Training Workshop for Partnership Community Program Officers of New South Wales Department of Aboriginal Affairs, Sydney, July.

Janet Hunt, Jon Altman, Katherine May

'Social benefits of Aboriginal engagement in natural resource management in NSW', Presentation of research findings to NSW Natural Resource Advisory Council, Sydney, June.

Boyd Hunter

'Neighbourhood Watch: Confessions of an eclectic sticky beak', Paper presented to Bureau of Crime Statistics and Research 40th Anniversary Symposium, Sydney, February.

'Indigenous employment in an Australian recession', Presentation to the Greens Forum on the Recession, Parliament House, Canberra, April.

'Indigenous employment gaps and the economic downturn', Presentation at States & Territories Workshop on COAG Targets & Trajectories, Canberra, May.

'The impact of drought on mental health and alcohol use', Presentation with Ben Edwards and Matthew Gray, Australian Institute of Family Studies, at An Inclusive Society: Practicalities and Possibilities, Australian Social Policy Conference, University of New South Wales, Sydney, July.

'Macro-factors and the ability to "close the gap"', Paper presented in the 'Closing the Indigenous gap' panel session at The Road to Recovery: Restoring Prosperity after the Crisis, Melbourne Institute Economic and Social Outlook Conference, University of Melbourne, Melbourne, November.

Kirrilly Jordan

'Indigenous employment policy during recession', Presentation to Crunch Time: Australia's Policy Future conference, Convened by the Australia Institute, Catalyst, Centre for Policy Development, Evatt Foundation, Per Capita, Search Foundation and Australian Fabians, Sydney, April.

'Indigenous Australians and social inclusion: explaining "exclusion" and contemplating "inclusion"', Paper (co-authored with B. Hunter) presented to Social Inclusion Research Forum, University of Melbourne Social Justice Initiative, Melbourne, June.

'Climate change and Indigenous Australians', Presentation at the ANU Climate Change Institute Open Day, Canberra, July.

Participant, Workshop on Adaptation to Climate Change in Indigenous Populations, NAILSMA, Darwin, November.

Kirrily Jordan, Hannah Bulloch, Geoff Buchanan

'Well-being and equality in Indigenous policy: Is the pursuit of statistical equality compatible with Indigenous well-being?', Paper presented to An Inclusive Society? Practicalities and Possibilities, Australian Social Policy Conference, University of New South Wales, Sydney, July.

Inge Kral

'Learning and literacy as social practice in remote Australian Indigenous communities', Presentation to Norwegian Institute for Adult Learning, January, Oslo.

Member, Discussion panel, Bilingual Education in the Northern Territory: Principles, Policy and Practice, AIATSIS Research Symposium, Canberra, June.

'Remote Indigenous youth practices in the digital age', NAIDOC Week talk for Department of Broadband, Communication and Digital Economy, Canberra, July.

'Remote Indigenous youth practices in the digital age', Presentation to Alice Springs Town Council, Alice Springs, July.

'Remote Indigenous youth practices: Learning, language and multimodal literacies', Seminar presented to Central Land Council, Alice Springs, July.

'Changing practice: Young people and new media technologies', Presentation with Shane White and Maxwell Tasman (young Ljamanu men), Symposium on Indigenous Music and Dance, CDU, Darwin, August.

'Literacy and social practice in the remote Indigenous context', Teacher Education Forum, Faculty of Education, University of Canberra, Canberra, October.

'The invisible subject: Indigenous youth speaking out loud', Paper presented at The Ethics and Politics of Engagement, Australian Anthropological Society Conference, Sydney, December.

David Martin

'Sustainable futures for Gulf Aboriginal people', Keynote Address presented at the conference Gulf Future Visions: Workshop and Small Business Forum, Gulf Savannah Development Association, Normanton, October.

'Hunter-gatherer political systems meet the western nation-state: Challenges in the engagement of Aboriginal people with the wider Australian society', Presentation to the Hierarchy and Power in the History of

Civilizations, Fifth International Conference, Russian Academy of Sciences and the Russian State University for the Humanities, Moscow, June.

'Applied anthropology in Australia: Different careers—different anthropology?', Workshop session presented at the Osaka Museum of Ethnology, Osaka, June.

Frances Morphy

'Making them fit: the Australian National Census and Aboriginal family forms', Plenary paper preceding Critical Reflections on Polygamy workshop, Faculty of Law, University of Victoria, British Columbia, October.

Presenting paper (with H. Morphy), at The End/s of Anthropology American Anthropological Association's 108th annual conference, Invited Session: 'Culture-Making and Embodied Material Forms: Papers in Honor of Fred R. Myers', Philadelphia, December.

'The Fitzroy Valley Population Project: Aims and progress', Presentations to the Fitzroy Futures Forum, Fitzroy Crossing, March and June.

'The history and culture of the Blue Mud Bay area', Briefing to DEWHA staff members, Canberra, September.

Erina Okeroa

'To what extent are Indigenous Protected Areas transferable?', Seminar presented at FSES, ANU, Canberra, January.

Sarah Prout

'Numbers and nomads: A critical evaluation of the myths and measures of Indigenous temporary mobility in Australia', Paper presented at the 3rd Triennial Aboriginal Policy Research Conference, Ottawa, Canada, March.

'Connections and disconnections: Indigenous temporary mobility in urban environments', Paper presented to Perspectives on Urban Life: Connections and Reconnections, AIATSIS Conference, Canberra, September.

'Regional centres and Indigenous population mobility: Lessons about service populations from Broome, Western Australia', Paper presented at the Social Policy Research Workshop, FaCHSIA, Canberra, November.

Anthony Redmond

'Redundant conceptual binarisms reproduced in Australian native title anthropology', Paper presented at the Transformations at the Cultural Interface: Contemporary Aboriginal Cultural Dynamics in South East Australia conference, Macquarie University, Sydney, December.

'The trade and theft of sexual services in the Kimberley frontier economy', Paper presented at The Ethics and Politics of Engagement, Australian Anthropological Society Conference, Sydney, December.

'Tracking Wurnan: Transformations in the trade and exchange of resources in the northern Kimberley', Paper presented at Indigenous Participation the Australian Economy conference, Canberra, November.

Tim Rowse

'The quantitative representation of "Indigenous culture": New method or the end of "culture"?' Paper presented at The Ethics and Politics of Engagement conference, Australian Anthropological Society, Sydney, December.

Will Sanders

'Ideology, evidence and competing principles', Paper presented to Public Policy Network Conference, Canberra, January.

'Fueling large group dominance: A critique of the Northern Territory local government electoral system', Presentation to DKCRC Core Project 4 Sustainable Desert Settlements Workshop, Adelaide, February.

'Fueling large group dominance: A critique of the Northern Territory local government electoral system', Seminar presented at NARU, Darwin, April.

'Fueling large group dominance: A critique of the Northern Territory local government electoral system', CDU Public Lecture, Alice Springs, April.

'Northern Territory unicameralism', Paper presented at Varieties of Unicameralism Conference, Crawford School, ANU, Held in ACT Legislative Assembly, July.

'"Working Future": A critique of policy by numbers', Seminar presented at NARU, Darwin, August.

'Intergovernmental relations in Australian Indigenous affairs', Paper for Political Parties and Civil Society Roundtable, Forum of Federations' Global dialogue series, Canberra, November.

Workshop on Northern Territory Local Government Electoral System, Conducted at Local Government Association of the NT Annual Conference, Alice Springs, November.

Jerry Schwab

Presentation on CAEPR to new Anthropology PhD students, ANU, Canberra, April.

'Targets, indicators, gaps and outcomes: Indigenous education policy and the confusion of education and schooling', Paper presented to Perspectives on Urban Life: Connections and Reconnections, AIATSIS Conference, Canberra, September.

'Philanthropy and Indigenous people: Enhancing Indigenous education outcomes', Presentation to Melbourne Community Foundation Roundtable on Philanthropy, Government and Aboriginal Community, Melbourne, November.

John Taylor

'Measuring short-term mobility among Indigenous Australians: Methodological issues', Paper presented with M. Bell, 48th Annual Meeting of the Western Regional Science Association, Napa, California, February.

'Australia and Canada: Measuring Indigenous mobility internationally', Paper presented with M. Norris and S. Clatworthy, Aboriginal Policy Research Conference, Ottawa, Canada, March.

'The demography of disadvantage and Indigenous public policy in Australia', Paper presented at the Aboriginal Policy Research Conference, Ottawa, Canada, March.

'Baseline profiling for community development: Insights from the Thamarurr region', Presentation to the FaHCSIA/COAG Remote Service Delivery Workshop on Baseline Profiles, FaHCSIA, Canberra, June.

'MCATSIA Population Project: Findings, implications, directions', Presentation to the meeting of the Ministerial Council on Aboriginal and Torres Strait Islander Affairs, Alice Springs, June.

'Indigenous urbanisation: Real or imagined?', Paper presented to Perspectives on Urban Life: Connections and Reconnections, AIATSIS Conference, Canberra September.

'Limits to diversity: The State, Indigenous settlement and mobility in remote Australia', Paper presented at Moved by the State: Perspectives on Relocation and Resettlement in the Circumpolar North, European Science Foundation Conference, University of Lapland, Rovaniemi, Finland, October.

'Indigenous urbanisation in Australia', Paper presented at the Indigenous Urbanization in International Perspective Conference, Departments of Native Studies and Geography, University of Saskatchewan, Canada, October.

'Spatial vulnerabilities in remote Indigenous Australia', Paper presented at Space and Place Matter: Informing Policy and Planning Through a Spatially-Integrated Social Science, Academy of the Social Sciences in Australia Symposium, Shine Dome, Canberra, November.

Mandy Yap

'Towards a gender index of development for Indigenous Australians', Paper presented to Aboriginal Policy Research Conference, Ottawa, March.

CONFERENCES/WORKSHOPS ATTENDED

Janet Hunt attended a Workshop on NSW Aboriginal Involvement in Land Management Consultation, NSW Department of Climate Change, Parramatta, January.

Janet Hunt attended Workshops on NSW Aboriginal Involvement in Land Management Consultation, NSW Department of Climate Change, Parramatta, Ulladulla and Wagga Wagga, February.

Kate Sullivan attended the 40th Anniversary Symposium of the NSW Bureau of Crime Statistics and Research, Sydney, February.

Jon Altman and Kirrily Jordan attended the Climate Change and Indigenous People: Potential Implications and Opportunities workshop convened by the Department of Environment, Water, Heritage and the Arts and Department of Climate Change, March.

Boyd Hunter attended the National Institute of Rural and Regional Australia workshop, Canberra, March.

Jerry Schwab attended the ANU anthropology graduate induction day, Canberra, March.

Nicholas Biddle attended the Indigenous Demography Workshop, ABS, Canberra, April.

Kirrily Jordan attended the Community Jobs Summit, Melbourne, May.

Janet Hunt participated in New South Wales Department of Environment and Climate Change workshop on Strengthening Community Well-Being, Sydney, June.

Bill Fogarty, Janet Hunt, Jerry Schwab and Georgina Taylor attended Bilingual Education in the Northern Territory: Principles, Policy and Practice, AIATSIS Research Symposium, Canberra, June.

Nicholas Biddle attended the Indigenous Economic Development Workshop, FaHCSIA, Canberra, June.

Geoff Buchanan attended 'Impressions of Baniyala: a remote NT Indigenous community with a future', presented by Professor Helen Hughes, Mr Andy Butterfield and Ms Sara Hudson, The Centre for Independent Studies, Sydney, July.

Katherine May attended the Biodiversity for Climate Protection conference, Green Institute, Canberra, August.

Kate Sullivan attended the Indigenous Young People, Crime and Justice Australian Institute of Criminology conference, Parramatta, August–September.

Bill Fogarty, Janet Hunt, Boyd Hunter, Kirrily Jordan, Inge Kral, Jerry Schwab, Kate Sullivan and Mandy Yap attended Perspectives on Urban Life: Connections and Reconnections, AIATSIS Conference 2009, ANU, September.

Janet Hunt attended AusAID Training Workshop for NGO Accreditation panel members, Canberra, September.

Maggie Brady and Kate Sullivan attended Preventing Aggression in the Licensed Environment, NSW Bureau of Crime Statistics and Research Occasional Seminar, Presented by Ross Homel, Griffith Institute for Social and Behavioural Research, Sydney, October.

Geoff Buchanan was a Volunteer at Barks, Birds & Billabongs: Exploring the Legacy of the 1948 American-Australian Scientific Expedition to Arnhem Land, International Symposium, Canberra, November.

Kate Sullivan attended the Transformations at the Cultural Interface: Contemporary Aboriginal Cultural Dynamics in South-east Australia conference at Macquarie University, Sydney, December.

APPENDIX F. KEY MEDIA PUBLICATIONS

CAEPR researchers and research featured significantly in print, web-based, radio and TV media through 2009. Jon Altman, Bill Fogarty, Kirrily Jordan, Seán Kerins, Inge Kral, and John Taylor in particular provided a large number of media interviews on issues including the Northern Territory Emergency Response, outstations policy, climate change and climate policy, land rights and native title, IPA declarations, the Caring for Country program, and the implications of reforms to CDEP.

Key CAEPR-authored media publications are listed below.

JON ALTMAN

A nation building and jobs plan for Indigenous Australia, Crikey, 12 February,

<<http://www.crikey.com.au/2009/02/12/a-nation-building-and-jobs-plan-for-indigenous-australia/>>

Sorry Day anniversary: One year on, mind the gap, Crikey, 13 February, <<http://www.crikey.com.au/Politics/20090213-The-Apology-to-Australias-Indigenous-Peoples-Reflections-12-months-On.html>>

NIT FORUM: A Racist Intervention. *National Indigenous Times*, 20 February 2009

<<http://www.nit.com.au/opinion/story.aspx?id=17121>>.

Budget status quo will just widen the Gaps, Crikey, 14 May,

<<http://www.crikey.com.au/2009/05/14/budget-status-quo-will-just-widen-the-gaps/>>

'No movement on the outstations', *Sydney Morning Herald*, 26 May,

<<http://www.smh.com.au/opinion/no-movement-on-the-outstations-20090525-bkq5.html?page=-1>>

'Working future and outstations: Sure to fail?', *National Indigenous Times*, 25 June.

'What "Liberal Consensus"? A review of Politics of Suffering: Indigenous Australia and the End of Liberal Consensus, by Peter Sutton', newmatilda.com, 16 July.

'After the NT intervention: Violence up, malnutrition up, truancy up', Crikey, 9 November, <<http://www.crikey.com.au/2009/11/09/after-the-nt-intervention-violence-up-malnutrition-up-truancy-up/>>.

NICHOLAS BIDDLE

'Specific plan needed to close the gap for urban Aborigines', *Sydney Morning Herald*, 7 August.

BILL FOGARTY

'Closing the Gap by closing the schools', *Canberra Times*, 27 March.

'NIT FORUM: Rudd to be tested on closing school gap', *National Indigenous Times*, 2 April, <<http://www.nit.com.au/Opinion/story.aspx?id=17447>>

SEÁN KERINS

'NIT FORUM: Black lands should be in black hands', *National Indigenous Times*, 21 January, <<http://www.nit.com.au/Opinion/story.aspx?id=16880>>.

INGE KRAL

'NIT FORUMS: Missing links in literacy debate', *National Indigenous Times*, 30 April, <<http://www.nit.com.au/Opinion/story.aspx?id=17634>>.

'Youth learning workshop', *Land Rights News*, April.

APPENDIX G. CAEPR PUBLICATIONS PROGRAM 2009

RESEARCH MONOGRAPHS

Power, Culture, Economy: Indigenous Australians and Mining, CAEPR Research Monograph No. 30, edited by J.C. Altman and D.F. Martin.

DISCUSSION PAPERS

No. 289 'Ideology, evidence and competing principles in Australian Indigenous affairs: From Brough to Rudd via Pearson and the NTER', by W. Sanders (October).

WORKING PAPERS

- No. 50 'Ranking regions: Revisiting an index of relative Indigenous socioeconomic outcomes', by N. Biddle (January).
- No. 51 'Some reflections on the quality of administrative data for Indigenous Australians: The importance of knowing something about the unknown(s) by B.H. Hunter and A. Ayyar (March).
- No. 52 'Towards a gender related index for Indigenous Australians', by M. Yap and N. Biddle (March).
- No. 53 'Location and segregation: The distribution of the Indigenous population across Australia's urban centres', by N. Biddle (March).
- No. 54 'Beyond Closing the Gap: Valuing diversity in Indigenous Australia', by J.C. Altman (April).
- No. 55 'Indigenous temporary mobility: An analysis of the 2006 Census snapshot', by N. Biddle and S. Prout (June).
- No. 56 'Planning for growth: Indigenous population projections, – 2006–31', by N. Biddle and J. Taylor (July).
- No. 57 'Commercial water and Indigenous Australians: A scoping study of licence allocations', by J.C. Altman and W. Arthur (September).
- No. 58 'The geography and demography of Indigenous migration: Insights for policy and planning', by N. Biddle (October).
- No. 59 'Catching Kordbolbok: From frog survey to closing the gap in Arnhem Land, northern Australia, through Indigenous and non-Indigenous collaboration', by E. Ens, G. Vallance, S. Namundja, V. Garlmgarr, B. Gurwalwal, P. Cooke and K. McKenzie (November).
- No. 60 'Social benefits of Aboriginal engagement in natural resource management', by J. Hunt, J.C. Altman and K. May (December).
- No. 61 'Location or qualifications? Revisiting Indigenous employment through an analysis of Census place of work data', by N. Biddle (December).

APPENDIX H. CAEPR STAFF LECTURES IN ANU COURSES

AUSTRALIAN INDIGENOUS POLICY (ANTH 8040); INTRODUCTION TO AUSTRALIAN INDIGENOUS POLICY (ANTH8029)

Coordinator: Dr Will Sanders

Lectures

Will Sanders: Competing principles and practice in Australian Indigenous policy;

Historical change, geography and the competing principles; Ideology, moralising and generational change in Australian Indigenous policy; Income support/ welfare and employment policy; Child welfare/protection policy; Health policy: Holism, inter-sectoralism and 1990s mainstreaming; Housing policy: Tenure, geography, needs and alternative agendas; New Mainstreaming and whole-of-government policy ideas; Failure, success and rhetorical registers in Australian Indigenous policy

Maggie Brady: Alcohol policy and the community good

Jon Altman: Land policy and alternative Indigenous futures

Inge Kral: Indigenous youth, literacy and learning in remote Australia

Sarah Prout: Mobility and policy

AUSTRALIAN INDIGENOUS DEVELOPMENT (ANTH 8045)

Coordinator: Dr John Taylor

These courses explore the theory and practice of development as it relates to Indigenous peoples in Australia.

Lectures

John Taylor: International development theory; Indigenous peoples and development; Development approaches in Indigenous Australia; Demography, participation and development; Indigenous rights and economic participation

Boyd Hunter: Prospects for 'closing the gaps'

Jerry Schwab: Education and development

Jon Altman: Land tenure and development; Hybrid economies and livelihoods

Seán Kerins: Cultural and natural resource management

Kirrily Jordan: Indigenous employment and the Australian Employment Covenant

Janet Hunt: Government, governance and development; Conceptualising Indigenous Australian development

OTHER LECTURES

CAEPR staff also provided the following lectures at ANU:

Jon Altman presented a lecture on 'Impact of mining on Indigenous society and culture' to Environmental Management and Indigenous People (ANTH8044).

Jon Altman and Seán Kerins (with Francesca Merlan) presented a lecture on "'Closing the Gap": Addressing Indigenous disadvantage in Australia' to Unravelling Complexity PhB course (UGRD3001), FSES.

Maggie Brady presented a lecture on 'Culture and development' to Applied Anthropology in Development, School of Archaeology and Anthropology.

Boyd Hunter presented a lecture on 'An evaluation of the CDEP scheme' to Case Studies in Social Policy, Master of Social Research course, Australian Demographic Social Research Institute.

Boyd Hunter presented a lecture on 'Prospect for "Closing the Gaps" in Indigenous economic policy debate' to the Master of Economic Policy course, College of Business and Economics.

Will Sanders presented a lecture 'Competing principles in Australian Indigenous affairs: Inclusion in the social security system' to Principles of Social Policy (POGO 8084).

Will Sanders presented a lecture 'Groups and values in public policy: Aborigines and welfare', for Bureaucracy, Politics and Power (POLS 2009).

APPENDIX I. CAEPR AND THE ANU

JON ALTMAN

Member, Advisory Board, NCIS

Member, Governance Board for the Climate Change Institute

Member, Indigenous Endowment Committee

Program Convenor, Master of Applied Anthropology and Participatory Development (MAAPD)

HILARY BEK, NICHOLAS BIDDLE, JOHN TAYLOR

Participated in CASS Integration Planning Forum

GEOFF BUCHANAN

CAEPR Environmental Assessment (with Abbie Anticich, ANU Development Studies student), ANU Social, Economic and Environmental Sustainability at Work program, ANUgreen

JOHN HUGHES

Fire Warden, CAEPR

JANET HUNT

Member, Education Committee, CASS (to June)

Panel member, Launch of ANU Reconciliation Action Plan

BOYD HUNTER

Member, Committee on Information Strategy, CASS

Member, Research Themes Advisory Committee, CASS

Convenor, CASS Research Theme 5 'Indigenous Societies, Art and Culture'

Mentor, for Dr P. Radoll for an ARC Discovery Indigenous Researchers Development project 'Adoption and Effective Use of Information Communication Technologies in Indigenous Communities in Australia.'

KIRRILY JORDAN

Diversity Network contact, CASS

Presentation on 'Indigenous Australians and climate change', ANU Climate Change Institute Open Day

DAVID MARTIN

Discussions with student, and comments on Honours thesis, CASS, ANU.

FRANCES MORPHY

Member, Humanities and Creative Arts Committee, ANU E Press

Member, Elspeth Young Memorial Grant Scholarships Committee, Jabal Centre

Member, Human Research Ethics Committee

WILL SANDERS

Member, Research Committee, CASS

Member, NARU Management Committee

Member, Committee allocating International Postgraduate Research Scholarships, CASS

Reviewer, ARC Linkage Applications, CASS

Reviewer, International Postgraduate Research Scholarships Applications, CASS

JERRY SCHWAB

Reviewer, ARC Linkage Applications, CASS

JOHN TAYLOR

Member, Research Income Advisory Committee, CASS

Presentation on 'Research income generation' at CASS Planning Forum.

MANDY YAP

Fire warden, CAEPR

APPENDIX J. INTERNATIONAL COLLABORATIONS

LIFESPAN LEARNING AND LITERACY

Professor Shirley Brice Heath, Professor at Large, Stanford and Brown Universities, is an international collaborator on CAEPR's Lifespan Learning and Literacy research project. This ARC Linkage Project is a partnership with the Fred Hollows Foundation investigating examples of 'best practice' programs that are attractive to post-school age young adults (aged 16–25) and engage them in activities that encourage learning and multi-modal literacy development. Professor Brice Heath visited CAEPR in August 2008 to participate in a Theory and Processes in Informal Learning workshop with Inge Kral and Jerry Schwab; and again in September 2009 to participate in the Youth Learning Symposium held in Darwin.

Dr Sumathi Renganathan, an Endeavour Research Fellow, was a Visiting Fellow at CAEPR for four months in 2009, undertaking a research project on Indigenous literacy in Malaysia and Australia in collaboration with Dr Inge Kral and Dr Jerry Schwab. Dr Renganathan is working on issues related to literacy, schooling and education as experienced in the everyday social practices of a contemporary Semai community, a large Orang Asli community in Peninsular Malaysia.

ASSESSING DEVELOPMENT: DESIGNING BETTER INDICES OF POVERTY AND GENDER EQUITY

This research by Dr Janet Hunt, CAEPR Fellow, is working towards new indices of poverty and gender equity applicable both at national/supranational levels and to smaller groups affected by a policy or program. Dr Hunt is an Investigator on this ARC Linkage Project with Chief Investigator Professor Thomas Pogge (Centre for Applied Philosophy and Public Ethics), and Dr Sharon Bessell (Policy and Governance Program), Dr Christian H. Barry (School of Humanities), Dr Yuk Chu Liu (Crawford School of Economics and Government) (all ANU), Professor Alison Jaggar (University of Colorado at Boulder), and Partner Investigators from International Women's Development Agency, Oxfam Great Britain, Oxfam America, Philippines Health Social Science Association and Action Against Hunger (UK).

URBAN INDIGENOUS POPULATIONS

CAEPR's Indigenous Populations Project which is funded by MCATSIA includes a collaboration with the University of Saskatchewan on issues related to urban Indigenous populations. During the year this involved staff exchange for conference and seminar presentations in Canada and Australia as well as a sharing of ideas on urban segregation

measures. Dr Taylor is also an Adjunct Professor and Policy Associate of the Aboriginal Policy Research Consortium (International) at the University of Western Ontario. Via this network, members of the population research team participated in the 3rd International Aboriginal Policy Research Conference held in Ottawa in March.

HYBRID ECONOMIC FUTURES FOR REMOTE INDIGENOUS AUSTRALIA

Featuring a new Indigenous hybrid economy model that recognises a distinctive customary sector alongside market and state sectors, this project will provide a path-breaking means to address entrenched Indigenous Australian under-development and dependence in remote Australia. Professor Jon Altman, ARC Australian Professorial Fellow, visited University of Cape Town in November, collaborating with scholars and presenting research findings at the Department of Social Anthropology, and Monash South Africa Campus, Johannesburg.

Professor Altman is a project partner/visiting professor as part of a UK Economic and Social Research Council project application titled *The Domestic Moral Economy: An Ethnographic Study of Values in the Asia-Pacific Region*, based at University of Manchester in United Kingdom. If successful he will visit for short periods over 2011–15.

SELF-DETERMINATION, SELF-GOVERNANCE AND DEVELOPMENT FOR INDIGENOUS PEOPLES

CAEPR and Reconciliation Australia share a Memorandum of Understanding with University of Arizona, Tucson, Arizona, United States of America to facilitate cooperation between the participating institutions in support of self-determination, self-governance and development efforts of Indigenous peoples through research, outreach and education.

INDIGENOUS RIGHTS RESEARCH PROJECT

Under this collaboration with Professor Sachiko Kubota (Hiroshima University), Professor Shigenobu Sugito (Sugiyama University), Associate Professor Hiroki Takakura (Tohoku University) and Dr Junko Maruyama (Kyoto University) CAEPR has hosted workshops with the School of Archaeology and Anthropology. This comparative project is examining the limits to the recognition of distinctive rights for indigenous people across three different kinds of states, and the way in which the recognition of rights is reflected in policy and changes in policy over time.

APPENDIX K. PROFESSIONAL ACTIVITIES, COLLABORATIONS AND OUTREACH

PROFESSIONAL ACTIVITIES

Jon Altman

Associate Editor, *The Asia Pacific Journal of Anthropology*

Consulting Editor, *Arena Journal*

Board Member, *Art Monthly Australia*

Consulting Editor, *Arena Magazine*

Referee, ARC Discovery Projects, ARC Linkage Projects, ARC Discovery (Indigenous Research Development) Projects

Referee, *Journal of Natural Resources, Policy Research, Studies in Political Economy* (Canada), *Oceania, Sydney Law Review, Traffic*

Reviewer, Allen and Unwin, Cambridge University Press, Oxfam Australia, Reconciliation Australia, ANU E Press

Nicholas Biddle

Co-Editor, *Australian Journal of Labour Economics*

Maggie Brady

Referee, *Drug and Alcohol Review, Medical Journal of Australia, Aboriginal and Islander Health Worker Journal*

Emilie Ens

Referee, *African Journal of Ecology*

Janet Hunt

Referee, *Australian Journal Public Administration*

Boyd Hunter

Managing Editor, *Australian Journal of Labour Economics*

Referee, Australian Institute of Family Studies research paper series, *Australian Journal of Labour Economics*

Referee, ARC Discovery Projects

David Martin

Referee, *International Indigenous Policy Journal*, *Australian Aboriginal Studies*

Sarah Prout

Referee, *Geographical Research*, *Population Studies*

Will Sanders

Referee, *Australian Historical Studies*, *Australian Journal of Politics and History*, *Australian Review of Public Affairs*, *Ethnicities*, *Human Organisation*, *International Indigenous Policy Journal*, *Political Studies*, *Public Administration*

Referee, Australian Housing and Urban Research Institute paper

Jerry Schwab

Referee, *AlterNative: An International Journal of Indigenous Peoples*

Reviewer, paper for Division of Indigenous Education and Training Futures, Queensland Department of Education and Training

John Taylor

Australia-Asian Editor, *International Indigenous Policy Journal*

KEY COLLABORATIONS AND OUTREACH**Jon Altman**

Adjunct Professor, School for Environmental Research, CDU, Darwin

Member, National Advisory Committee of the Globalism Research Institute at Royal Melbourne Institute of Technology University

Member, Kakadu Research Advisory Committee

Member, Technical Reference Group for Dugong and Marine Turtle Management Project, NAILSMA

Special Advisor, Indigenous Water Policy Group

Member, Advisory Committee, NRM and Enterprise Development Project, CDU

Member, Advisory Committee for the Tropical Rivers and Coastal Knowledge

(Advisory Board Theme 2.2: water and water values and sustainable enterprises)

Member, Policy and Advocacy Committee, Academy of Social Sciences in Australia

Member, Research Committee, The Australia Institute

Policy Adviser, Australian Council of Social Service

Director and the Secretary, Karrkad-Kandji Trust

Presentation at launch of Black Politics, Manning Clark House, Canberra

Verbal evidence to the Senate Community Affairs Committee on the Family Assistance and Other Legislation Amendment (2008 Budget and Other Measures) Bill 2009, Parliament House, Canberra

Presentation to United Nations Youth Association (ACT) on Human Rights in Indigenous Australia

Met with Elias Masango, South African High Commissioner, to discuss Indigenous issues

Attended the Northern Ventures CRC Forum, Cairns, regarding a proposed Cooperative Research Centre bid

Expert witness in *Shaw v Minister for Families, Housing, Community Services and Indigenous Affairs* [2009] FCA 844 (in relation to Alice Springs town camps)

Meetings with Gundjheimi Aboriginal Corporation, Jabiru, Northern Territory regarding the use of mining royalties

Meeting with Jawoyn Association and Sunrise Health Service, Katherine, Northern Territory regarding the Northern Territory Emergency Response

Met with Dr Allan Hawke and the Environment Protection and Biodiversity Conservation Act review team

Jon Altman, Kirrily Jordan

Verbal evidence to House of Representatives Standing Committee on Aboriginal and Torres Strait Islander Affairs Inquiry into Remote Community Stores, Parliament House, Canberra

Jon Altman, Seán Kerins

Met with Roderick S. Vogel and Patrick O'Leary of the PEW Foundation, and Dr Michael Looker from the Nature Conservancy to discuss issues associated with fundraising for the Karrkad-Kandji Trust

Jon Altman, Katherine May

Invited to ARC Major Grants Announcement Expo at Parliament House to highlight the work of the People on Country project and the ARC funded 'Hybrid economic futures for remote Indigenous Australia' project

Assisted Warddeken LML and Bawinanga Aboriginal Corporation and Djelk Rangers with funding proposal to Caring for our Country program for the implementation of the Warddeken and Djelk IPA Management Plans 2009-13

Jon Altman, Frances Morphy

Advised and accompanied delegation of Bawinanga Aboriginal Corporation and Lahanapuy Homelands Association visiting Parliament House, September

Jon Altman, John Taylor

Met with Wendy Matthews, FaHCSIA, to discuss possible future research

Nicholas Biddle

Member, Advisory Group on Aboriginal and Torres Strait Islander Statistics, ABS

Maggie Brady

Attended Australian National Council on Drugs consultation

Met with delegation from NorthWest Queensland Primary Health Care and Yippippi Gulf Indigenous Health Council

Attended NHMRC Advisory Committee meeting to establish Clinical Practice Guidelines for Volatile Solvent Use

Met with Sylvia Lawson, Visiting Fellow Humanities Research Centre, regarding the 1949 film Bitter Springs

Met with three visiting scholars from Taiwan Institute of Ethnology, regarding Aboriginal health and well-being

Met with Grant Akesson from WA Drug and Alcohol Office for update on Fitzroy Crossing matters

Attended National Drug & Alcohol Awards Dinner at Parliament House

Met with Social Marketing division of DoHA, re design and materials for their national Close the Gap health promotion campaign

Provided advice to Western Australia Drug and Alcohol Office regarding evaluation of Fitzroy Crossing alcohol restrictions

Provided advice to Department of Health Social Marketing division regarding educational materials on petrol sniffing

Facilitated all day workshop and provided advice on the establishment of a Drug and Alcohol Rehab facility at Normanton, Queensland

Maggie Brady, John Taylor, Boyd Hunter

Attended a dinner meeting organised by ANU's Vice-Chancellor with Minister Warren Snowden

Maggie Brady, John Taylor

Hosted a delegation from Taiwan visiting CAEPR to discuss issues related to Indigenous minority groups

Geoff Buchanan

Member, Community Economies Research Group

Nanni Concu, Jennifer Koenig

Met with Claire Summers, Maningrida Arts and Culture to discuss costs of environmental management

Met with Helen Clarke, Batchelor Institute to discuss costs of environmental management

Emilie Ens

Met and discussed People on Country project with staff of DEWHA, Greening Australia NT, CDU, NRETAS Weeds Branch, NRETAS Biodiversity Branch, NT Herbarium, National Herbarium of NSW, Macquarie University Indigenous Bio Resources Group, Myer Foundation, NLC, ERISS and FSES, ANU

Collaborative research with Indigenous Bio-Resources Group at Macquarie University

Collaborative research with Gill Towler from the National Herbarium of NSW

Article with Gill Towler in Botanic Gardens Trust News, December 2009, 'Work with Indigenous Rangers in remote Arnhem Land'

Assisted Warddeken LML with nursery grant application

Assisted Yugul Mangi Rangers with acquisition of Greening Australian NT Healthy Waters Grant for a feral animal exclusion project

Janet Hunt

President, National Management Committee, Australians for Native Title and Reconciliation

Member, Central Land Council Community Development Reference Group

Member, Advisory Panel to Well-being Centres, Royal Flying Doctor Service, Queensland

Presentation on the Northern Territory Intervention to Burton/Garran students, ANU

Presentation on the Northern Territory Intervention to the Belconnen Probus Club

Attended a Close The Gap Coalition Steering Committee meeting, Parliament House, Canberra

Boyd Hunter

Member, Longitudinal Study of Indigenous Children Steering Committee, FaHCSIA

Member, Steering Committee for Jumbunna pilot project for the successful ARC

Member, Australian Research Alliance for Children and Youth Project on Crime in Indigenous Communities in Wilcannia and Menindee

Member, Indigenous Clearinghouse Scientific Reference Group (FaHCSIA/Australian Institute of Health and Welfare/Australian Institute of Family Studies); Subject matter expert for Indigenous Clearinghouse

Provided comments to Northern Territory Council of Social Service in relation to the data available to measure poverty in the Northern Territory

Provided advice to Justin Larkin Senior Policy Adviser Operations and Programs Division Workforce Victoria

Met with ABS regarding the extent of user support for the development of a CURF for the LFS special Survey on Forms of Employment, and on Contract Work and Labour Hire

Advice to Don Weatherburn, New South Wales Bureau of Crime Statistics and Research on econometric issues

Provided comments to FaHCSIA on Longitudinal Study of Indigenous Children sample report by Roy Morgan Research

Coordinated CAEPR staff comments (from Jon Altman, Maggie Brady, Janet Hunt, Boyd Hunter and Dante Mavec) on Reconciliation Australia's discussion paper 'Measuring the Impact of Reconciliation Actions in seeking to Close the Gap'

Seán Kerins

Met with DEWHA about the National Reserve System, Caring for Country initiatives and the Australian Wildlife Conservancy

Liaised with Peter Garrett's office about the article he wrote in the *National Indigenous Times* and Australian government investment in Caring for Country programs and Australian Wildlife Conservancy

Provided case study material concerning the West Arnhem Land Fire Abatement program to the 'UNESCO World Report on Cultural Diversity' as an example of cultural diversity and sustainable development

Inge Kral

Presentation on remote Indigenous issues to University of the Third Age

Advice and assistance to Ngaanyatjarra Council regarding literacy and learning issues, and changes to CDEP

Continuing analysis of 2007 population data for Ngaanyatjarra Council

Provided advice and assistance to NT Library Libraries and Knowledge Centres Program regarding Indigenous early years literacy strategy

Assistance to Warlpiri Education and Training Trust on Indigenous literacy issues

Contributed to submission by Indigenous Remote Communications Association to the Senate Committee reviewing the rollout of the National Broadband Network

David Martin

Member, Executive of the Australian Anthropological Society

Member, Oxfam Australia's Aboriginal and Torres Strait Islander Program reference group

Frances Morphy

Advice to the Laynhapuy Homelands Association, Yirrkala, Northern Territory, on the conduct of a sociodemographic survey of the homelands population

Sarah Prout

Provided research briefing to Louise Hanlon, Literacy and Numeracy Branch, Commonwealth Department of Education, Employment and Workplace relations (DEEWR)

Will Sanders

Adjunct Senior Fellow, School for Social and Policy Research, Charles Darwin University

Subject matter expert, Indigenous Clearinghouse Scientific Reference Group (FaHCSIA/ Australian Institute of Health and Welfare/Australian Institute of Family Studies)

Presented talk 'CDEP and the NT Intervention' to Society of Quakers, Canberra

Presented a lecture to Macquarie University Bachelor of Community Welfare students

Met Local Government Association of the Northern Territory to discuss vote counting systems

Jerry Schwab

Provided ongoing evaluation and advice to Murdi Paaki Regional Enterprise Corporation on Murdi Paaki Young Leaders Project

John Taylor

Adjunct Professor and Policy Associate, Aboriginal Policy Research Consortium (International), University of Western Ontario

Academic member, Indigenous Clearinghouse Board

Participated in an informal consultation with Jeni Klugman, United Nations Development Program, on the Human Development Report 2010 hosted by the Social Policy Research Centre, University of New South Wales

Mandy Yap

Secretary, Economic Society of Australia (ACT Branch)

CAEPR staff

Met with Dermott Smyth to discuss a potential bid in relation to the Northern Ventures Cooperative Research Centre

Met with Anthony Cheshire to discuss the proposed Northern Ventures Cooperative Research Centre

CAEPR STAFF AND STUDENTS 2009



